



Donghua Chain Group

Donghua Chain Group

Product Catalogue Bulk Material Conveyor Chains



We only have one standard. THE BEST.

Donghua Limited  
Unit 1, Sidings Close (off Wednesfield Way)  
West Midlands WV11 3DR, UK  
Phone: +44 (0)1902 866200  
Fax: +44 (0)1902 722814  
sales@donghua.co.uk  
www.donghua.co.uk

## Product Catalogue Bulk Material Conveyor Chains



Donghua Chain Group

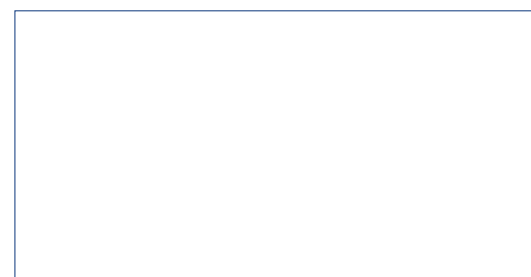
We chain the world

Donghua Chain Group

Product Catalogue Bulk Material Conveyor Chains

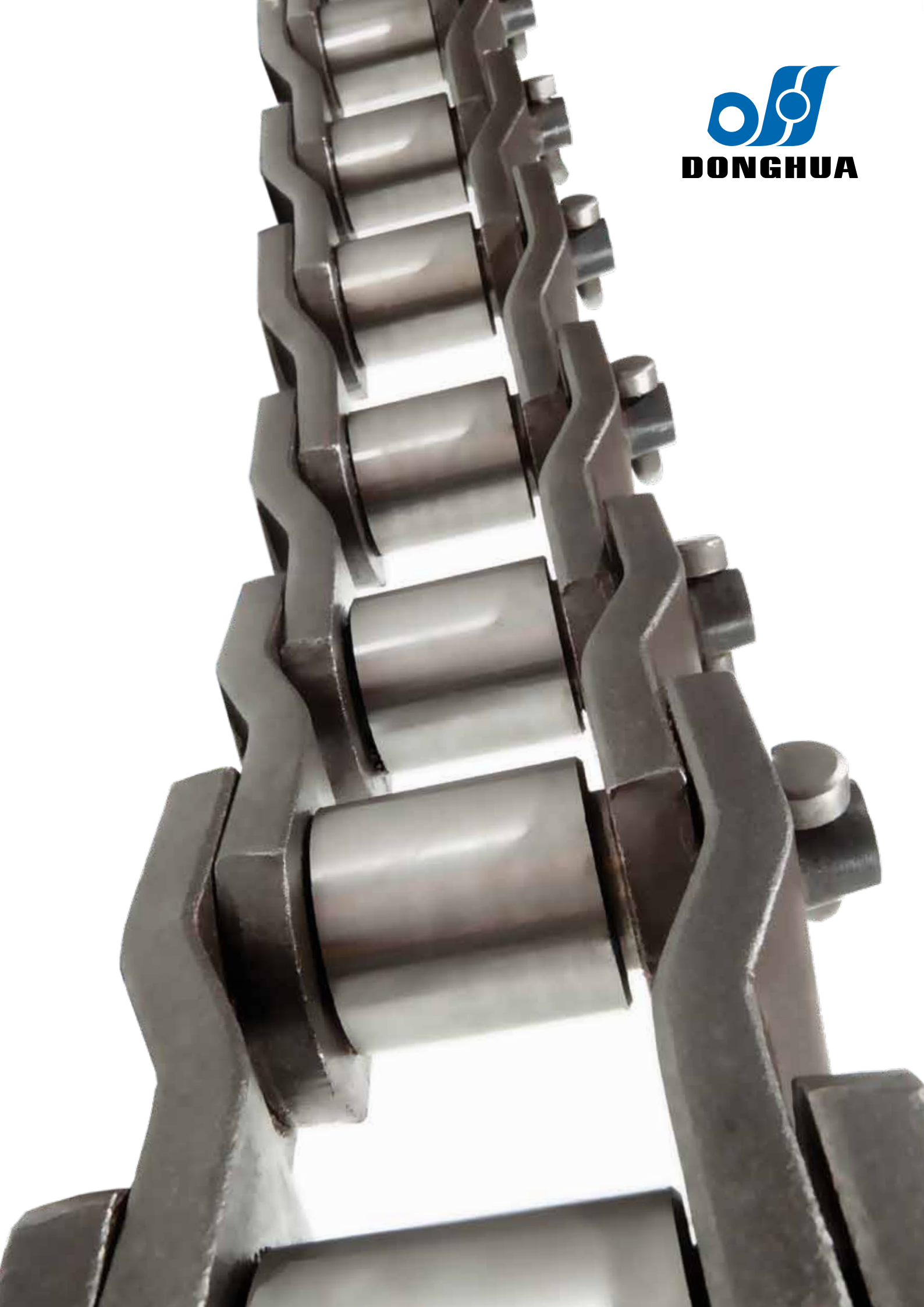


Donghua International BV  
Toermalijnstraat 6B  
1812 RL Alkmaar, The Netherlands  
Phone: +31 72 8200 120  
Fax: +31 72 540 1996  
info@donghua.eu  
www.donghua.eu

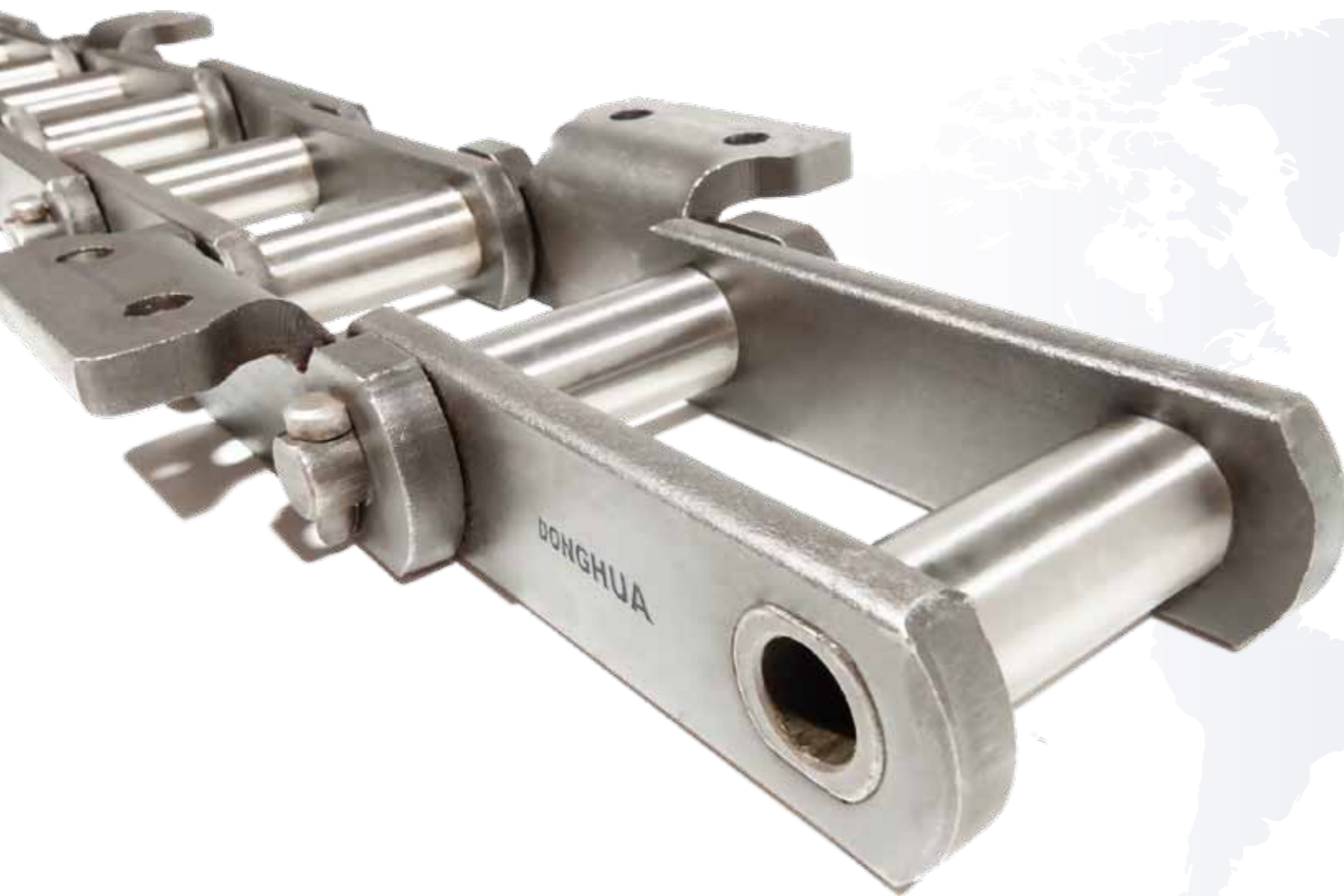


# Product Catalogue

## Bulk Material Conveyor Chains



# Content



Introduction Donghua Chain Group .....	6
Quality performance and partners .....	7
Head quarters and production plants .....	8
Total range in stock .....	9
The Donghua conveyor chain range .....	10

## Bulk Material Conveyor Chains

Short pitch precision roller chains (A series) .....	12
Short pitch precision roller chains (B series) .....	13
HSP series high strength heavy duty short pitch roller chains .....	14
Conveyor chains for hoisting cinder .....	15
Scraper conveyor chains .....	15
Conveyor chains for hoisting .....	21
Conveyor chain with attachments .....	25
Engineering steel bush chains .....	28
Engineering steel bush chain attachments .....	28
Heavy duty cranked link transmission chains .....	31
Conveyor chains (Z series) .....	36
Conveyor chains with attachments (Z series) .....	37
Hollow pin conveyor chains (ZC series) .....	38
Sprockets .....	39
Slat assemblies .....	40
Selection of lubrication .....	41
Product application .....	46

# Donghua

The Hangzhou Donghua Chain Group is one of the biggest chain producers in the world and started its European activity in 2009. Since the early nineties Donghua has been producing and branding complete chains for well known European chain manufacturers. To supply its European customers direct, Donghua decided to develop local facilities in the European market. For this reason warehouses with substantial stocks in the West Midlands (UK), Alkmaar (The Netherlands), Leverkusen (Germany), and Budapest (Hungary) have been established. Donghua Ltd., Donghua international BV and Donghua Kft. are all full subsidiary companies of the Donghua Chain Group Co, Ltd. in China.

The Donghua Chain Group Co, Ltd. is located in Hangzhou, an industrial town near to the Chinese East Coast, 300 kilometres from Shanghai. Donghua employ more than 3000 employees, working together they produce more than 30 million metres of finished chain per year - our extensive product range and production capacity affirm Donghua as one of the biggest chain manufacturers worldwide.

### Quality Performance

All chains from Donghua are produced according to SO9001- 2000 and are API certified. All conveyor chains available in imperial, metric and bespoke pitch options. As part of our high quality chain production process, we use our own cold rolling mills for the plate material to ensure exact plate thickness in the finest tolerance classes. All our chains carry a unique production code for tracking and traceability during and after the production process.

Our customers select Donghua chain because of the unique price:performance ratio of our products. Our European team has over 25 years experience in design, development and production of chain solutions and this expertise is a perfect fit for the needs of both the OEM and replacement MRO markets.



### Donghua Chain Group:

- Xinghua
- Linping
- Hangzhou

Donghua Transmission Co., Ltd.

- Donghua Subsidiaries
- Donghua Partners



## Headquarter and production plants



Liping Headquarters

Head office Donghua group

Production of:

- Automotive chains
- Conveyor chains

Liping Headquarters



Liping Branch North

Production of:

- Transmission chains
- Rotary chains
- Oil field chains
- Light transport chains



Liping Branch South

Production of:

- Leaf chains
- Escalator chains
- Agricultural chains



Xinghua Donghua Gear Co., Ltd.

Production of:

- Gears
- Sprockets

## Total range in stock

Fundamental to Donghua's growing success is the strategic location of our world-wide distribution centres.

These warehouses are located at key vantage points and carry vast stocks of Donghua chain, enabling us to be both responsive to local demand and dramatically reduce delivery timescales to our customers. All Donghua subsidiaries and partners proactively support each other so all our customers benefit from the availability of the large stocks of chain that each centre holds locally. Having the complete product range available from locally held stocks helps to firmly establish Donghua as one of the world's leading chain manufacturers and distributors.



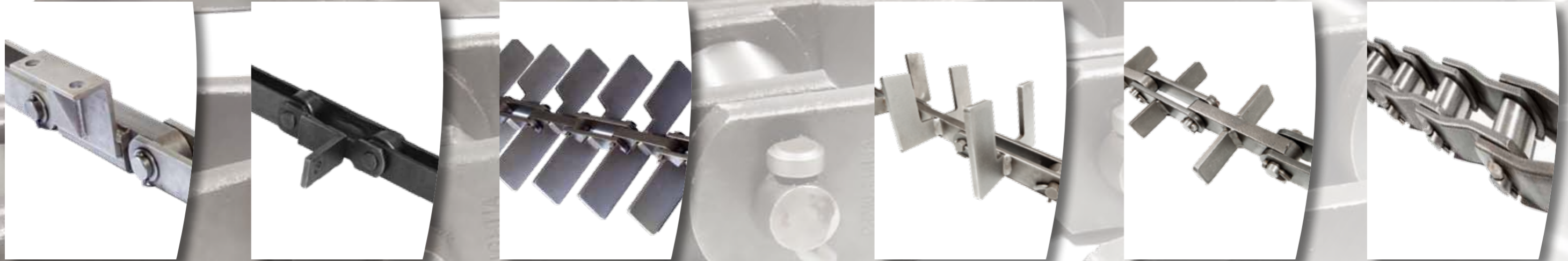
Donghua Limited - United Kingdom  
UK distribution centre



Donghua International BV - The Netherlands  
Competence centre industrial and agricultural chains



## The Donghua conveyor chain range



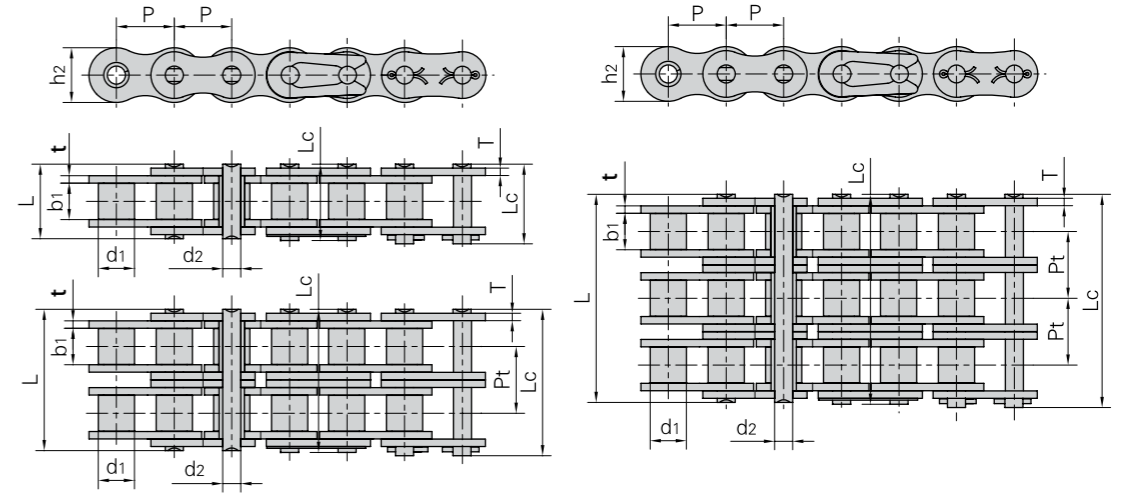
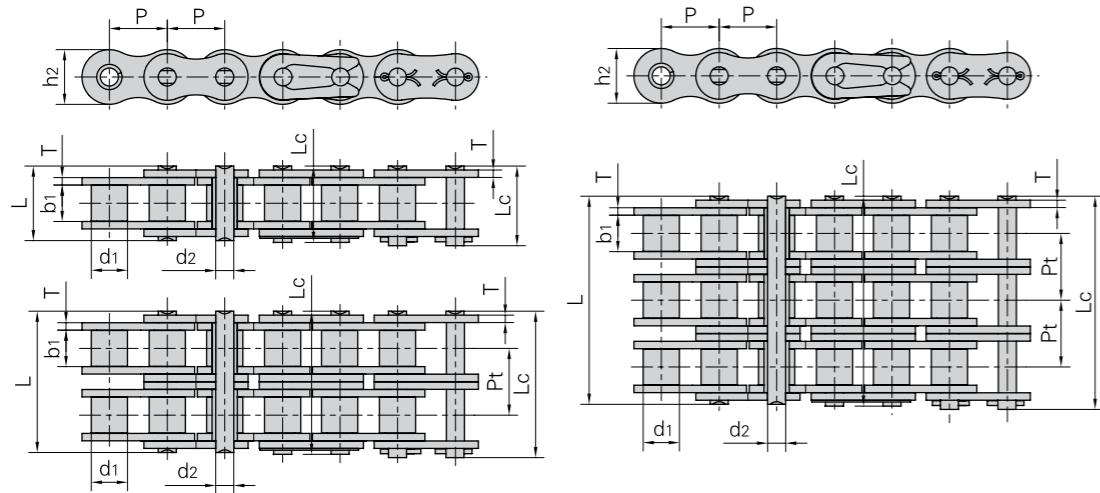
Donghua's high performance conveyor chains have been specially designed with unique heat treated plates which offer twice the breaking loads of comparable products. These hardened link plates significantly increase the ultimate tensile strength of our conveyor chain by up to 90%, enabling us to meet the growing customer demand for higher breaking loads.

Available in imperial and metric pitch sizes with weld-on, integral standard or bespoke attachments, Donghua's range of high performance conveyor chain is distributed world-wide for use across a wide spectrum of industries and applications.



Short Pitch Precision Roller Chains (A series)

Short Pitch Precision Roller Chains (B series)



DIN/ISO Chain No.	ANSI Chain No.	Roller Pitch diameter		Width between inner plates		Pin diameter		Pin length	Inner plate depth	Plate thickness	Transverse pitch	Ultimate tensile strength	Average tensile strength	Weight per meter
		P	d1 max	b1 min	d2 max	L max	Lc max							
		mm	mm	mm	mm	mm	mm	mm	mm	mm	mm	kN/lbf	kN	kg/m
16A-1	80	25.40	15.88	15.75	7.92	32.7	35.0	24.00	3.25	-	56.70/12886	69.4	2.60	
20A-1	100	31.75	19.05	18.90	9.53	40.4	44.7	30.00	4.00	-	88.50/20114	109.2	3.91	
24A-1	120	38.10	22.23	25.22	11.10	50.3	54.3	35.70	4.80	-	127.00/28864	156.3	5.62	
28A-1	140	44.45	25.40	25.22	12.70	54.4	59.0	41.00	5.60	-	172.40/39182	212.0	7.50	
32A-1	160	50.80	28.58	31.55	14.27	64.8	69.6	47.80	6.40	-	226.80/51545	278.9	10.10	
36A-1	180	57.15	35.71	35.48	17.46	72.8	78.6	53.60	7.20	-	280.20/63682	341.8	13.45	
40A-1	200	63.50	39.68	37.85	19.85	80.3	87.2	60.00	8.00	-	353.80/80409	431.6	16.15	
48A-1	240	76.20	47.63	47.35	23.81	95.5	103.0	72.39	9.50	-	510.30/115977	622.5	23.20	
16A-2	80-2	25.40	15.88	15.75	7.92	62.7	64.3	24.00	3.25	29.29	113.40/25773	141.8	5.15	
20A-2	100-2	31.75	19.05	18.90	9.53	76.4	80.5	30.00	4.00	35.76	177.00/40227	219.4	7.80	
24A-2	120-2	38.10	22.23	25.22	11.10	95.8	99.7	35.70	4.80	45.44	254.00/57727	314.9	11.70	
28A-2	140-2	44.45	25.40	25.22	12.70	103.3	107.9	41.00	5.60	48.87	344.80/78364	427.5	15.14	
32A-2	160-2	50.80	28.58	31.55	14.27	123.3	128.1	47.80	6.40	58.55	453.60/103091	562.4	20.14	
36A-2	180-2	57.15	35.71	35.48	17.46	138.6	144.4	53.60	7.20	65.84	560.50/127386	695.0	29.22	
40A-2	200-2	63.50	39.68	37.85	19.85	151.9	158.8	60.00	8.00	71.55	707.60/160818	877.4	32.24	
48A-2	240-2	76.20	47.63	47.35	23.81	183.4	190.8	72.39	9.50	87.83	1020.60/213955	1255.3	45.23	
16A-3	80-3	25.40	15.88	15.75	7.92	91.7	93.6	24.00	3.25	29.29	170.1/38659	198.4	7.89	
20A-3	100-3	31.75	19.05	18.90	9.53	112.2	116.3	30.00	4.00	35.76	265.5/60341	309.6	11.77	
24A-3	120-3	38.10	22.23	25.22	11.10	141.4	145.2	35.70	4.80	45.44	381.0/86591	437.2	17.53	
28A-3	140-3	44.45	25.40	25.22	12.70	152.2	156.8	41.00	5.60	48.87	517.2/117545	593.3	22.20	
32A-3	160-3	50.80	28.58	31.55	14.27	181.8	186.6	47.80	6.40	58.55	680.4/154636	780.6	30.02	
36A-3	180-3	57.15	35.71	35.48	17.46	204.4	210.2	53.60	7.20	65.84	840.7/191068	983.6	38.22	
40A-3	200-3	63.50	39.68	37.85	19.85	223.5	230.4	60.00	8.00	71.55	1061.4/241227	1217.8	49.03	
48A-3	240-3	76.20	47.63	47.35	23.81	271.3	278.6	72.39	9.50	87.83	1530.9/347932	1756.5	71.60	

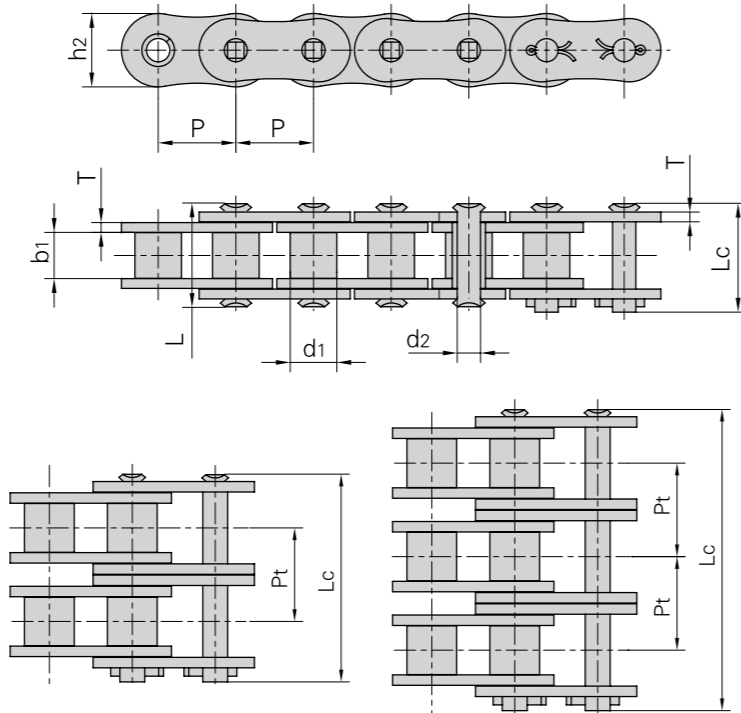
DIN/ISO Chain No.	Pitch	Roller diameter	Width between inner plates	Pin diameter	Pin length	Inner plate depth	Plate thickness	Transverse pitch	Ultimate tensile strength	Average tensile strength	Weight per meter	
												P
	mm	mm	mm	mm	mm	mm	mm	mm	kN/lbf	kN	kg/m	
16B-1	25.40	15.88	17.02	8.28	36.10	37.4	21.00	4.15/3.10	-	60.0/13636	72.8	2.71
20B-1	31.75	19.05	19.56	10.19	41.30	45.0	26.40	4.50/3.50	-	95.0/21591	106.7	3.70
24B-1	38.10	25.40	25.40	14.63	53.40	57.8	33.20	6.00/4.80	-	160.0/36364	178.0	7.10
28B-1	44.45	27.94	30.99	15.90	65.10	69.5	36.70	7.50/6.00	-	200.0/45455	222.0	8.50
32B-1	50.80	29.21	30.99	17.81	66.00	71.0	42.00	7.00/6.00	-	250.0/56818	277.5	10.25
40B-1	63.50	39.37	38.10	22.89	82.20	89.2	52.96	8.50/8.00	-	355.0/80682	394.0	16.35
48B-1	76.20	48.26	45.72	29.24	99.10	107.0	63.80	12.00/10.00	-	560.0/127272	621.6	25.00
56B-1	88.90	53.98	53.34	34.32	114.60	123.0	77.80	13.50/12.00	-	850.0/193180	940.0	35.78
16B-2	25.40	15.88	17.02	8.28	68.00	69.3	21.00	4.15/3.10	31.88	106.0/24091	133.0	5.42
20B-2	31.75	19.05	19.56	10.19	77.80	81.5	26.40	4.50/3.50	36.45	170.0/38636	211.2	7.20
24B-2	38.10	25.40	25.40	14.63	101.70	106.2	33.20	6.00/4.80	48.36	280.0/63636	319.2	13.40
28B-2	44.45	27.94	30.99	15.90	124.60	129.1	36.70	7.50/6.00	59.56	360.0/81818	406.8	16.60
32B-2	50.80	29.21	30.99	17.81	124.60	129.6	42.00	7.00/6.00	58.55	450.0/102273	508.5	21.00
40B-2	63.50	39.37	38.10	22.89	154.50	161.5	52.96	8.50/8.00	72.29	630.0/143182	711.9	32.00
48B-2	76.20	48.26	45.72	29.24	190.40	198.2	63.80	12.00/10.00	91.21	1000.0/227272	1130.0	50.00
56B-2	88.90	53.98	53.34	34.32	221.20	229.6	77.80	13.50/12.00	106.60	1600.0/363635	1760.0	71.48
16B-3	25.40	15.88	17.02	8.28	99.80	101.2	21.00	4.15/3.10	31.88	160.0/36364	203.7	8.13
20B-3	31.75	19.05	19.56	10.19	114.20	117.9	26.40	4.50/3.50	36.45	250.0/56818	290.0	10.82
24B-3	38.10	25.40	25.40	14.63	150.10	154.6	33.20	6.00/4.80	48.36	425.0/96591	493.0	20.10
28B-3	44.45	27.94	30.99	15.90	184.20	188.7	36.70	7.50/6.00	59.56	530.0/120454	609.5	24.92
32B-3	50.80	29.21	30.99	17.81	183.20	188.2	42.00	7.00/6.00	58.55	670.0/152273	770.5	31.56
40B-3	63.50	39.37	38.10	22.89	226.80	233.8	52.96	8.50/8.00	72.29	950.0/215909	1092.5	48.10
48B-3	76.20	48.26	45.72	29.24	281.60	289.4	63.80	12.00/10.00	91.21	1500.0/340909	1710.0	75.00
56B-3	88.90	53.98	53.34	34.32	327.80	336.2	77.80	13.50/12.00	106.60	2240.0/545450	2464.0	107.18



### HSP Series High Strength Heavy Duty Short Pitch Roller Chains

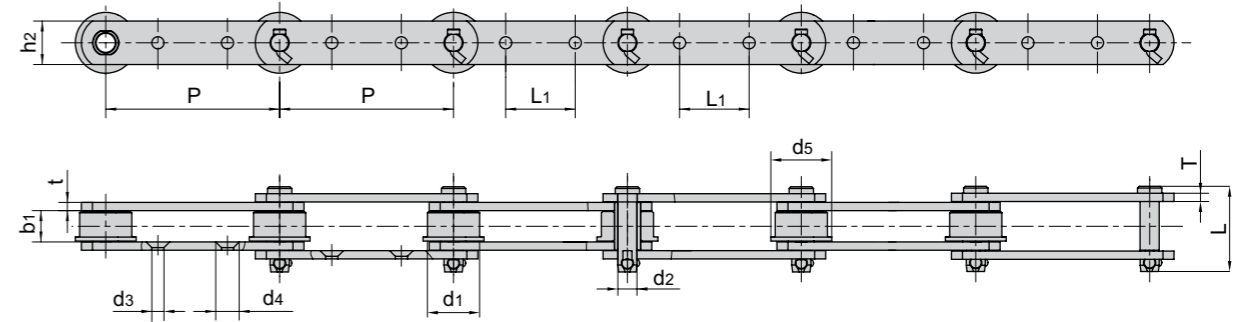
Simplex, Duplex & Triplex strands

By adopting integrated optimum design of the structural dimensions, parts material and heat treatment process, the ultimate tensile strength of HSP series high strength roller chain is up to 50% more than that of A series standard roller chain. Moreover, it has excellent performances of fatigue strength and impact resistance etc..



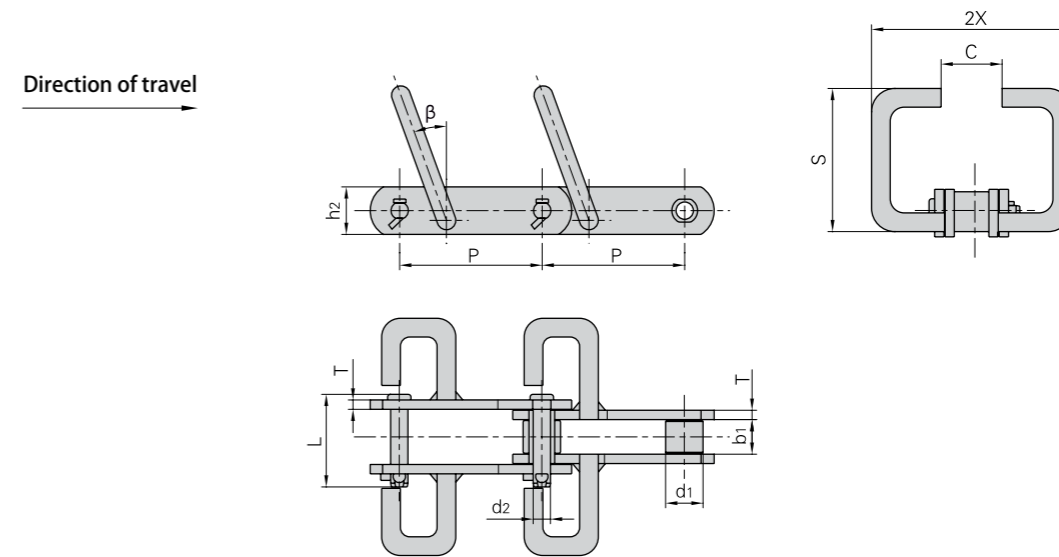
Donghua Chain No.	Pitch	Roller diameter	Width between inner plates	Pin diameter	Pin length		Inner plate depth	Plate thickness	Transverse pitch	Ultimate tensile strength	Average tensile strength	Weight per meter
	p	d1 max	b1 min	d2 max	L max	Lc max	h2 max	T	Pt	Q min	Q0	q
	mm	mm	mm	mm	mm	mm	mm	mm	mm	mm	kN	kg/m
80HSP-1	25.40	15.88	15.75	7.94	36.2	38.9	24.1	4.0	-	89.2/20066	98.1	3.36
100HSP-1	31.75	19.05	18.95	9.54	43.6	46.9	30.1	4.8	-	131.8/29649	145.0	4.90
120HSP-1	38.10	22.23	25.22	11.11	53.5	57.5	36.2	5.6	-	176.0/39592	196.0	7.12
140HSP-1	44.45	25.40	25.22	12.71	57.6	62.2	42.2	6.4	-	231.9/52149	255.0	8.88
160HSP-1	50.80	28.58	31.55	14.29	68.2	73.0	48.2	7.2	-	294.5/66260	324.0	11.72
200HSP-1	63.50	39.68	37.85	19.85	86.6	93.5	60.3	9.5	-	543.6/122295	598.0	19.80
80HSP-2	25.40	15.88	15.75	7.94	68.8	72.0	24.1	4.0	32.59	178.4/40132	196.2	6.65
100HSP-2	31.75	19.05	18.95	9.54	82.7	86.0	30.1	4.8	39.09	263.6/59299	290.0	9.71
120HSP-2	38.10	22.23	25.22	11.11	102.4	106.4	36.2	5.6	48.87	356.4/80175	392.0	14.12
140HSP-2	44.45	25.40	25.22	12.71	109.8	114.4	42.2	6.4	52.20	463.6/104300	510.0	17.38
160HSP-2	50.80	28.58	31.55	14.29	130.1	134.9	48.2	7.2	61.90	588.0/132275	647.0	23.00
200HSP-2	63.50	39.68	37.85	19.85	164.9	171.8	60.3	9.5	78.31	1091.0/245429	1200.0	38.50
80HSP-3	25.40	15.88	15.75	7.94	101.4	104.6	24.1	4.0	32.59	267.6/60200	294.3	9.95
100HSP-3	31.75	19.05	18.95	9.54	121.8	125.1	30.1	4.8	39.09	395.4/88948	435.0	14.53
120HSP-3	38.10	22.23	25.22	11.11	151.2	155.2	36.2	5.6	48.87	534.5/120250	588.0	21.12
140HSP-3	44.45	25.40	25.22	12.71	162.0	166.6	42.2	6.4	52.20	695.5/156448	765.0	25.88
160HSP-3	50.80	28.58	31.55	14.29	192.0	196.8	48.2	7.2	61.90	882.7/198576	971.0	34.22
200HSP-3	63.50	39.68	37.85	19.85	243.2	250.1	60.3	9.5	78.31	1627.3/366073	1790.0	57.29

### Conveyor Chains for Hoisting Cinder



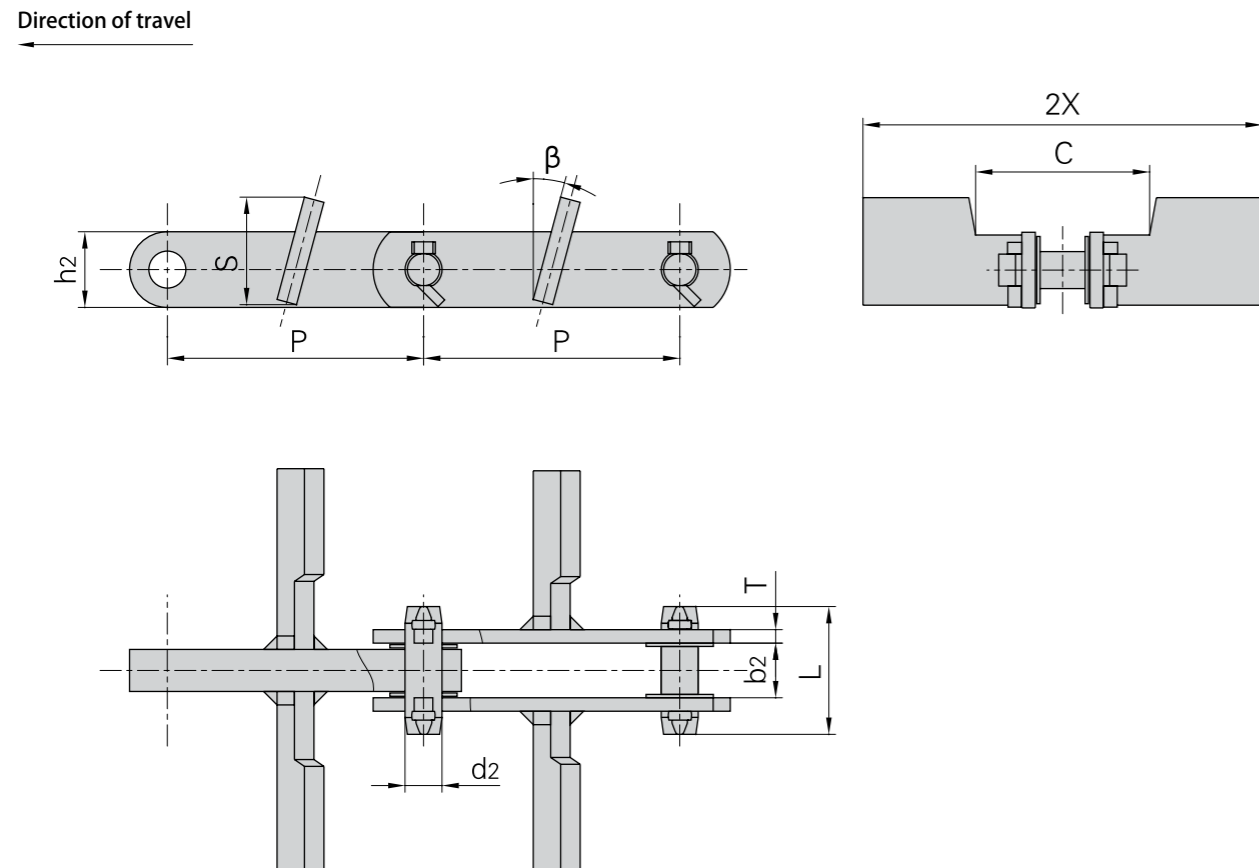
Donghua Chain No.	Pitch	Width between inner plates	Roller diameter		Pin diameter	Pin length	Plate depth	Plate thickness	Attachment dimension			Ultimate tensile strength	Weight per meter
	p	b1 min	d1 max	d5 max	d2 max	L max	h2 max	t/T max	L1 max	d3 max	d4 max	Q0 min	q
	mm	mm	mm	mm	mm	mm	mm	mm	mm	mm	mm	kN/lbf	kg/m
P200F70	200	35	60	70	22	98	50	9.5	80	14	27	320/71940	13.52

### Scraper Conveyor Chains



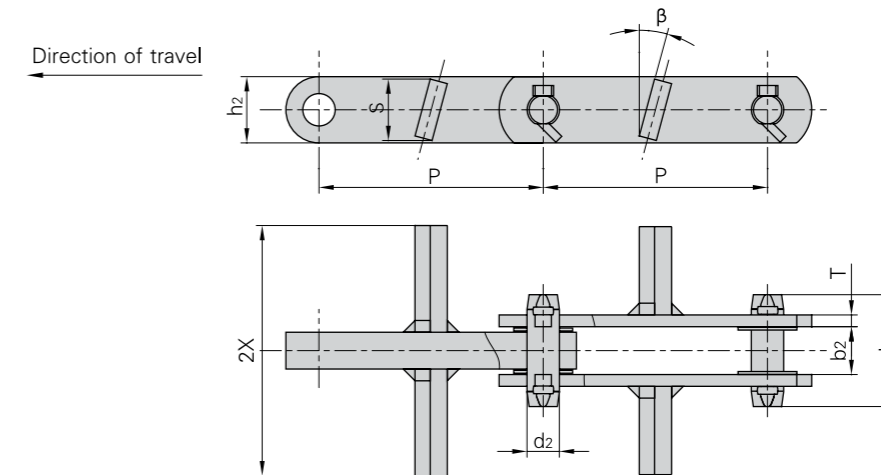
Donghua Chain No.	Pitch	Roller diameter	Width between inner plates	Pin diameter	Pin length	Plate depth	Plate thickness	Attachment dimension				Ultimate tensile strength	Weight per meter
	p	d1 max	b1	d2	L	h2	T	S	2X	C	beta	Q	q
	mm	mm	mm	mm	mm	mm	mm	mm	mm	mm	°	kN/lbf	kg/m
P152F51	152.4	40	36	18.5	95.5	50.8	10	175	310	110	20°	170/38242	24.9

## Scraper Conveyor Chains

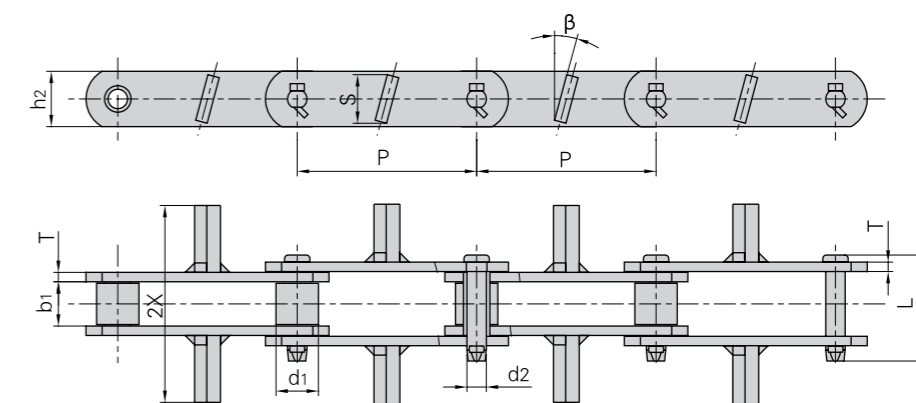


Donghua Chain No.	Pitch	Width between outer plates	Pin diameter	Pin length	Plate depth	Plate thickness	Attachment dimension				Ultimate tensile strength	Weight per meter
	P	b2	d2	L	h2	T	S	2X	C	beta	Q	q
	mm	mm	mm	mm	mm	mm	mm	mm	mm		kN/lbf	kg/m
P152F45	152.4	32.5	22.0	76.0	45.0	8.0	64.0	326	104	15°	260/58489	20.40
P152F45A	152.4	32.5	22.0	76.0	45.0	8.0	83.0	286	106	15°	260/58489	20.80
P152F45B	152.4	32.5	22.0	76.0	45.0	8.0	64.0	276	106	15°	260/58489	18.00
P152F45C	152.4	32.5	22.0	76.0	45.0	8.0	64.0	220	106	15°	260/58489	16.50
P152F47	152.4	34.0	22.0	85.0	45.0	12.0	81.0	400	106	15°	400/89983	30.90
P150F17A	150.0	25.0	18.5	67.3	38.1	10.0	115.0	180	112	15°	150/33743	14.50
P200F29	200.0	40.5	35.0	104.0	80.0	13.0	168.0	420	112	15°	530/119227	50.60
P200F29A	200.0	40.5	35.0	104.0	80.0	13.0	148.0	430	112	15°	530/119227	53.90
P200F35	200.0	33.0	26.5	77.0	50.0	10.0	145.5	430	210	15°	400/89983	28.93

## Scraper Conveyor Chains

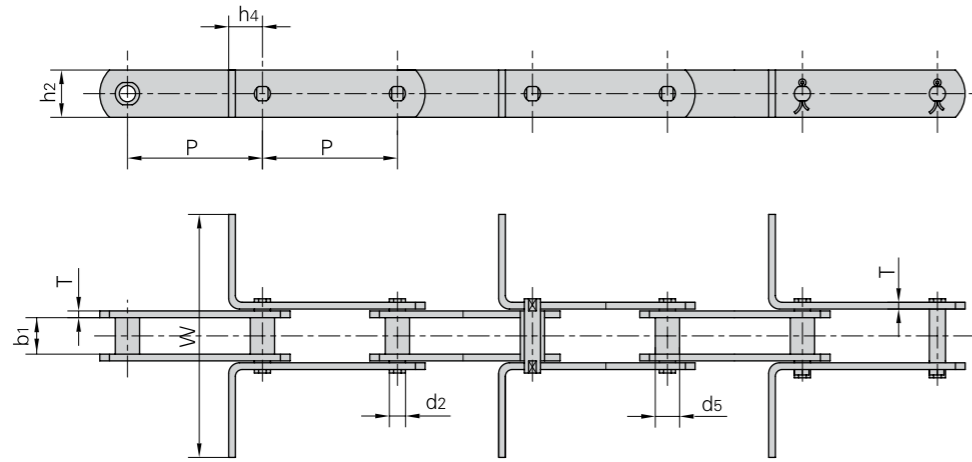


Donghua Chain No.	Pitch	Width between outer plates	Pin diameter	Pin length	Plate depth	Plate thickness	Attachment dimension			Ultimate tensile strength	Weight per meter
	P	b2	d2	L	h2	T	S	2X	beta	Q	q
	mm	mm	mm	mm	mm	mm	mm	mm		kN/lbf	kg/m
P101.6F20	101.6	16.5	17.46	53.7	38.0	6.0	34.0	210.0	45°	100/22496	7.26
P152F2	152.4	33.3	22.00	76.0	45.0	8.0	38.0	180.0	20°	260/58489	12.10
P152F45D	152.4	32.5	22.00	76.0	45.0	8.0	42.0	170.0	15°	260/58489	13.50
P152F45E	152.4	32.5	22.00	76.0	45.0	8.0	42.0	280.0	15°	260/58489	16.20
P152F45F	152.4	32.5	22.00	76.0	45.0	8.0	42.0	227.0	15°	260/58489	14.90
P152F46	152.4	40.8	25.00	86.0	50.0	9.0	49.0	290.0	15°	300/67487	20.80
P150F17C	150.0	25.0	18.50	67.3	38.1	10.0	36.0	168.0	15°	150/33743	10.60



Donghua Chain No.	Pitch	Width between inner plates	Roller diameter	Pin diameter	Pin length	Plate depth	Plate thickness	Attachment dimension			Ultimate tensile strength	Weight per meter
	P	b1	d1	d2	L	h2	T	S	2X	beta	Q	q
	mm	mm	mm	mm	mm	mm	mm	mm	mm		kN/lbf	kg/m
P152F48	152.4	37.6	36.0	16.5	90.0	47.0	8.0	42.0	170.0	15°	180/40492	12.1
RO6205MF3	152.4	37.0	38.1	15.9	88.0	45.0	8.0	42.0	170.0	15°	170/38242	12.4

### Scraper Conveyor Chains

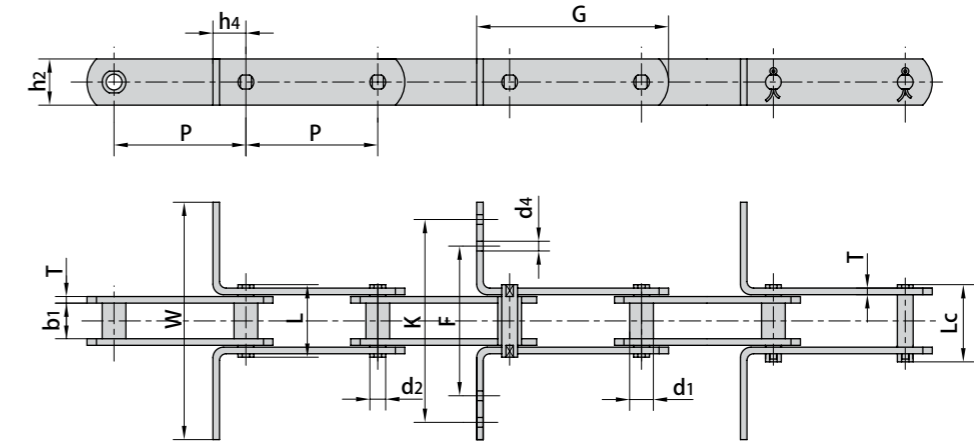


Donghua Chain No.	P		b1 min	d2 max	d5 max	h4	h2 max	T max	W	Q min	
	mm	mm									mm
MR56	100	125	-	24.0	10.0	15.0	20.0	30.0	4.0	•	56.0/12727
MR80	100	125	160	28.0	12.0	18.0	25.0	35.0	5.0	•	80.0/18182
MR112	100	125	160	32.0	15.0	21.0	35.0	40.0	6.0	•	112.0/25454
MR160	100	125	160	37.0	18.0	25.0	40.0	50.0	7.0	•	160.0/36364
MR224	125	160	200	43.0	21.0	30.0	44.0	60.0	8.0	•	224.0/50909
MR315	160	200	250	48.0	25.0	36.0	50.0	70.0	10.0	•	315.0/71591

Donghua Chain No.	P		b1 min	d2 max	d5 max	h4	h2 max	T max	W	Q min	
	mm	mm									mm
FVR40	80	100	125	18.0	10.0	15.0	20.0	25.0	3.0	•	42.0/9545
FVR63	100	125	160	22.0	12.0	18.0	25.0	30.0	4.0	•	64.0/14545
FVR90	100	125	160	25.0	14.0	20.0	30.0	35.0	5.0	•	100.0/22727
FVR112	100	125	160	30.0	16.0	22.0	35.0	40.0	6.0	•	120.0/27272
FVR140	125	160	200	35.0	18.0	26.0	38.0	45.0	6.0	•	145.0/32954
FVR180	125	160	200	45.0	20.0	30.0	44.0	50.0	8.0	•	190.0/43181
FVR250	160	200	250	55.0	26.0	36.0	50.0	60.0	8.0	•	275.0/62499

• Dimensions are specified by the customer

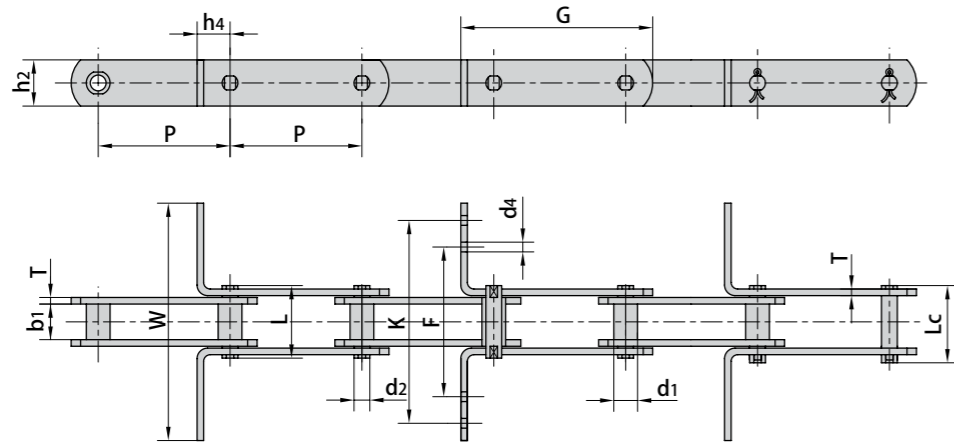
### Scraper Conveyor Chains



Donghua Chain No.	Pitch	Bush diameter	Width between inner plates	Pin diameter	Pin length		Ultimate tensile strength	Average tensile strength	Weight per meter
	P mm	d1 max mm	b1 min mm	d2 max mm	L max mm	Lc max mm	Q min kN/lbf	Q0 kN	q kg/m
MR22F1-B-100	100.0	12.0	12.50	8.00	30.6	34.0	22.0/4946	24.2	1.77
MR112F7-S-100	100.0	30.0*	32.00	15.00	64.5	69.0	112.0/36000	123.2	8.95
MR112F8-S-100	100.0	30.0*	32.00	15.00	64.5	69.0	112.0/36000	123.2	9.53
MR160F4-S-160	160.0	36.0*	37.00	18.00	85.0	-	160.0/36000	176.0	11.39
MR160F7-S-100	100.0	36.0*	37.00	18.00	75.7	84.7	160.0/36000	176.0	15.87
MR160F8-S-100	100.0	36.0*	37.00	18.00	75.7	84.7	160.0/36000	176.0	13.80
MR160F11-S-100	100.0	36.0*	37.00	19.60	75.7	84.7	160.0/36000	176.0	13.85
MR160F10-B-100	100.0	25.0	37.00	19.70	75.7	84.7	160.0/36000	176.0	13.16
MR224F1-S-125	125.0	42.0*	43.00	21.00	85.0	91.0	224.0/50357	246.4	17.92
MR450F1-S-200	200.0	60.0*	56.00	30.00	119.0	132.0	450.0/101165	495.0	35.23
M80-P100F1	100.0	18.0	28.00	12.00	55.0	58.5	80.0/18162	88.0	5.19
M180-P-100	100.0	26.0	28.85	18.00	62.5	-	180.0/40909	198.0	10.25
M310-P-125	125.0	40.0*	52.00	20.00	103.4	109.4	303.8/69045	334.0	19.88
M310F1-P-125	125.0	40.0*	52.00	20.00	103.4	109.4	303.8/69045	334.0	24.88
M310F1-P-150	150.0	40.0*	52.00	20.00	103.4	109.4	303.8/69045	334.0	19.13
FVR40F4-B-100	100.0	15.0	18.00	10.00	40.0	43.5	40.0/8992	44.0	2.88
FVR40F5-P-80	80.0	32.0*	18.00	10.00	36.0	40.0	40.0/8992	44.0	3.20
FVR90F1-B-125	125.0	20.0	25.00	14.00	52.0	56.4	150.0/33743	165.0	6.16
FVR112F3-B-155	155.0	22.0	65.00	16.00	109.0	-	120.0/26977	132.0	7.13
FVR180F2-B-160	160.0	30.0	49.00	20.00	91.0	97.0	250.0/56203	275.0	15.53
P100F16	100.0	23.0	28.00	16.00	66.0	-	115.0/26136	127.0	6.60
P101.6	101.6	44.5	50.80	23.84	136.5	-	600.0/136362	660.0	34.96
P125F3	125.0	25.0	36.00	18.00	82.0	-	220.0/49999	242.0	11.17
P125F4	125.0	25.0	36.00	18.00	82.0	-	220.0/49999	242.0	9.83
P160F12	160.0	50.0*	34.00	20.00	77.8	-	160.0/35993	176.0	10.30

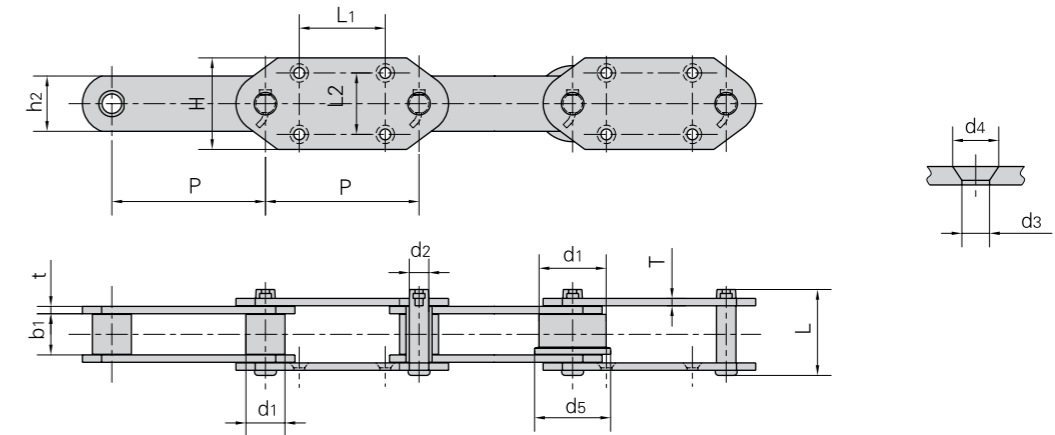
\*Indicates the external diameter of roller

### Scraper Conveyor Chains

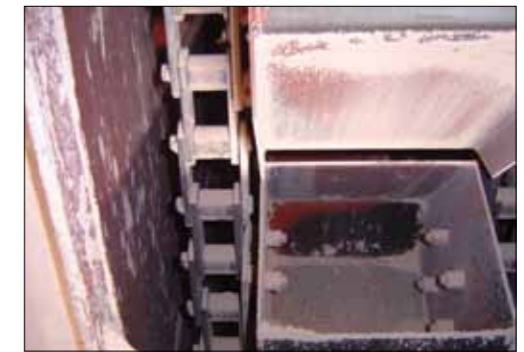


Donghua Chain No.	G	F	W	K	h4	h2	d4	T
	mm	mm	mm	mm	mm	mm	mm	mm
MR22F1-B-100	132.7	-	150.0	-	16.4	22.0	-	3.0
MR112F7-S-100	160.0	120.0	235.0	205.0	35.0	40.0	12.0	6.0
MR112F8-S-100	160.0	-	285.0	-	35.0	40.0	-	6.0
MR160F4-S-160	248.5	140.0	300.0	250.0	63.5	50.0	18.0	7.0
MR160F7-S-100	170.0	125.0	386.0	356.0	40.0	50.0	12.0	7.0
MR160F8-S-100	170.0	115.0	235.0	205.0	40.0	50.0	18.0	7.0
MR160F11-S-100	170.0	115.0	235.0	205.0	40.0	50.0	19.7	7.0
MR160F10-B-100	170.0	140.0	290.0	260.0	40.0	50.0	19.7	7.0
MR224F1-S-125	203.0	-	235.0	-	44.0	60.0	-	8.0
MR450F1-S-200	307.0	-	488.0	-	60.0	80.0	-	12.0
M80-P100F1	145.5	-	180.0	-	25.0	35.0	-	5.0
M180-P-100	163.0	-	185.0	-	35.0	50.0	-	6.0
M310-P-125	195.0	-	270.0	-	35.0	55.0	-	10.0
M310F1-P-125	195.0	-	560.0	-	35.0	55.0	-	10.0
M310F1-P-150	220.0	-	350.0	-	40.0	50.0	-	10.0
FVR40F4-B-100	134.5	-	200.0	-	20.0	25.0	-	4.0
FVR40F5-P-80	104.0	-	80.0	-	20.0	25.0	-	3.0
FVR90F1-B-125	175.0	90.0	290.0	270.0	30.0	40.0	9.0	5.0
FVR112F3-B-155	207.5	-	250.0	-	30.0	40.0	-	6.0
FVR180F2-B-160	230.0	248.0	368.0	308.0	35.0	60.0	8.0	8.0
P100F16	143.0	91.8	180.0	159.8	25.0	36.0	6.5	6.0
P101.6	198.6	-	206.5	-	62.0	60.0	-	14.5
P125F3	190.0	139.5	290.0	259.5	35.0	51.0	8.5	6.0
P125F4	190.0	119.5	220.0	191.5	35.0	51.0	8.5	6.0
P160F12	230.0	-	214.5	-	40.0	50.0	-	6.0

### Conveyor Chains for Hoisting

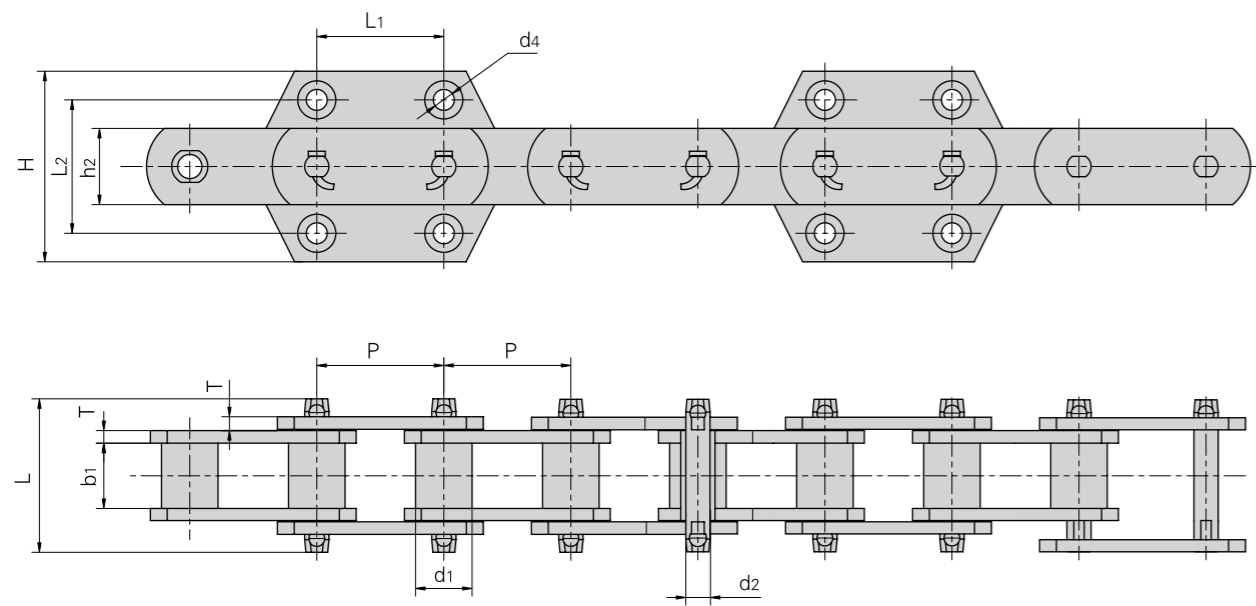


Donghua Chain No.	P	H	L1	L2	d3	d4
	mm	mm	mm	mm	mm	mm
P95	95.0	95.0	50.0	70.0	12.0	21.0
RF10150RF1	150.0	100.0	75.0	70.0	11.0	20.0
P150F47	150.0	110.0	75.0	75.0	12.0	22.0
P152F41	152.4	110.0	75.0	70.0	14.5	25.0
RF17200MF1-G-4	200.0	125.0	100.0	80.0	18.0	33.0
RF17200MF2-G-4	200.0	120.0	100.0	80.0	15.0	26.0
P250F6	250.0	150.0	140.0	100.0	17.7	30.0
P250F66	250.0	150.0	140.0	100.0	15.0	26.0
P250F71SS	250.0	150.0	110.0	100.0	18.0	-
P300F1	300.0	180.0	170.0	120.0	22.0	39.0
P350F2-G4	350.0	210.0	225.0	140.0	26.0	42.2



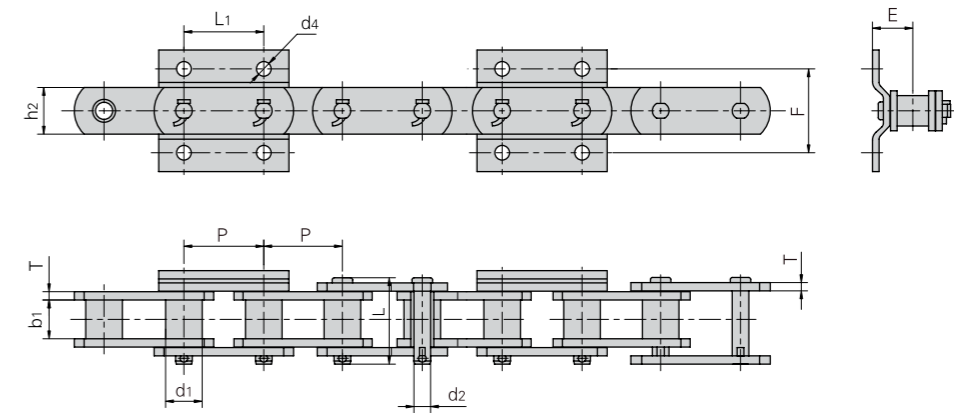
Donghua Chain No.	Pitch	Roller diameter		Width between inner plates	Pin diameter	Pin length	Plate depth	Plate thickness	Ultimate tensile strength	Average tensile strength	Weight per meter
	P	d1 max	d5	b1 min	d2 max	L max	h2 max	t/T max	Q min	Q0	q
	mm	mm	mm	mm	mm	mm	mm	mm	kN/lbf	kN	kg/m
P95	95.0	50.8	58.0	30.0	13.50	70.0	38.0	6.0	75.0/16871	82.5	9.93
RF10150RF1	150.0	50.0	60.0	30.0	14.50	69.0	38.1	8.0/6.3	200.0/44992	220.0	8.64
P150F47	150.0	54.0	-	40.0	27.00	112.0	68.5	12.0	600.0/67487	680.0	25.70
P152F41	152.4	38.1	-	36.0	15.50	90.0	50.0	8.0	150.0/33743	165.0	11.91
RF17200MF1-G-4	200.0	44.5	-	51.4	19.10	120.0	60.0	10.0	245.0/55114	269.5	17.60
RF17200MF2-G-4	200.0	44.5	-	51.4	19.10	109.5	50.8	9.5	213.0/47916	243.0	15.10
P250F6	250.0	63.5	-	67.0	31.80	146.0	90.0	12.0	900.0/101230	495.0	31.70
P250F66	250.0	80.0	-	51.4	19.10	109.5	50.8	9.5	329.0/73962	378.0	19.79
P250F71SS	250.0	100.0	125.0	79.0	22.00	120.0	64.0	10.0	320.0/71939	368.0	29.80
P300F1	300.0	70.0	-	75.0	35.00	174.0	100.0	16.0	1065.0/239580	1118.0	47.47
P350F2-G4	350.0	85.0	-	85.0	41.75	189.5	115.0	16.0	1200.0/269772	1372.0	48.43

Conveyor Chains for Hoisting

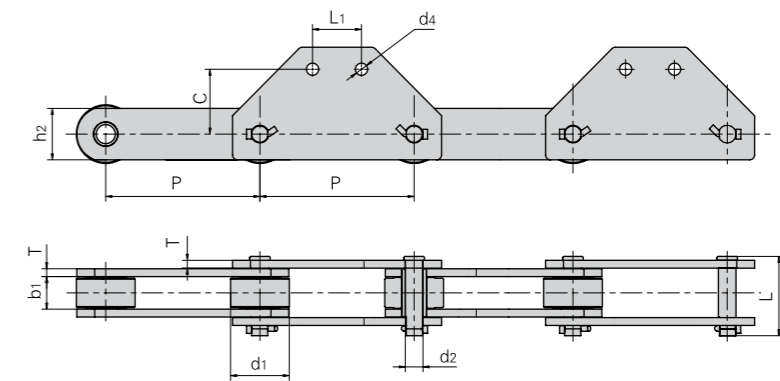


Conveyor type	Donghua Chain No.	Pitch	Roller diameter	Width between inner plates	Pin diameter	Pin length	Plate depth	Plate thickness	Attachment dimension				Ultimate tensile strength
		P	d1	b1	d2	L	h2	T	H	L2	L1	d4	Q <sub>min</sub>
		mm	mm	mm	mm	mm	mm	mm	mm	mm	mm	mm	mm
	P100F112.04	100.0	44.5	52.0	19.30	120.0	60.0	10.0	150	105	100	18.5	350.0/78735
	P100F107.04	100.0	50.8	58.0	25.40	120.0	75.0	10.0	150	105	100	18.5	550.0/123726
NE15	P101.6F92	101.6	26.5	27.0	11.50	70.0	35.0	6.0	-	90	40	12.0	100.0/22495
NE30	P152F119	152.4	36.0	36.5	15.50	90.0	50.0	8.0	-	120	60	14.0	240.0/53990
NE50	P152F120	152.4	36.0	36.5	15.50	90.0	50.0	8.0	110	70	75	14.0	240.0/53990
	P152F126	152.4	34.9	37.1	15.80	88.0	44.5	7.9	110	70	75	15.0	186.2/41887
NE100	P200F64	200.0	44.5	51.8	19.10	120.0	60.0	10.0	125	80	100	18.0	380.0/85484
NE150	P200F65	200.0	48.5	57.6	22.20	120.0	75.0	10.0	125	80	100	18.0	550.0/123727
	P200F63	200.0	48.5	57.6	22.20	125.0	75.0	10.0	125	80	100	18.5	315.0/70861
NE200	P250F42	250.0	63.5	67.4	31.75	143.0	90.0	12.0	150	100	140	18.0	750.0/168718
NE300	P250F43	250.0	63.5	67.4	31.75	146.0	90.0	12.0	150	100	140	18.0	750.0/168718
NE400	P300F9	300.0	70.0	75.0	35.00	170.0	100.0	16.0	180	125	170	22.0	1065.0/239580

Conveyor Chains for Hoisting

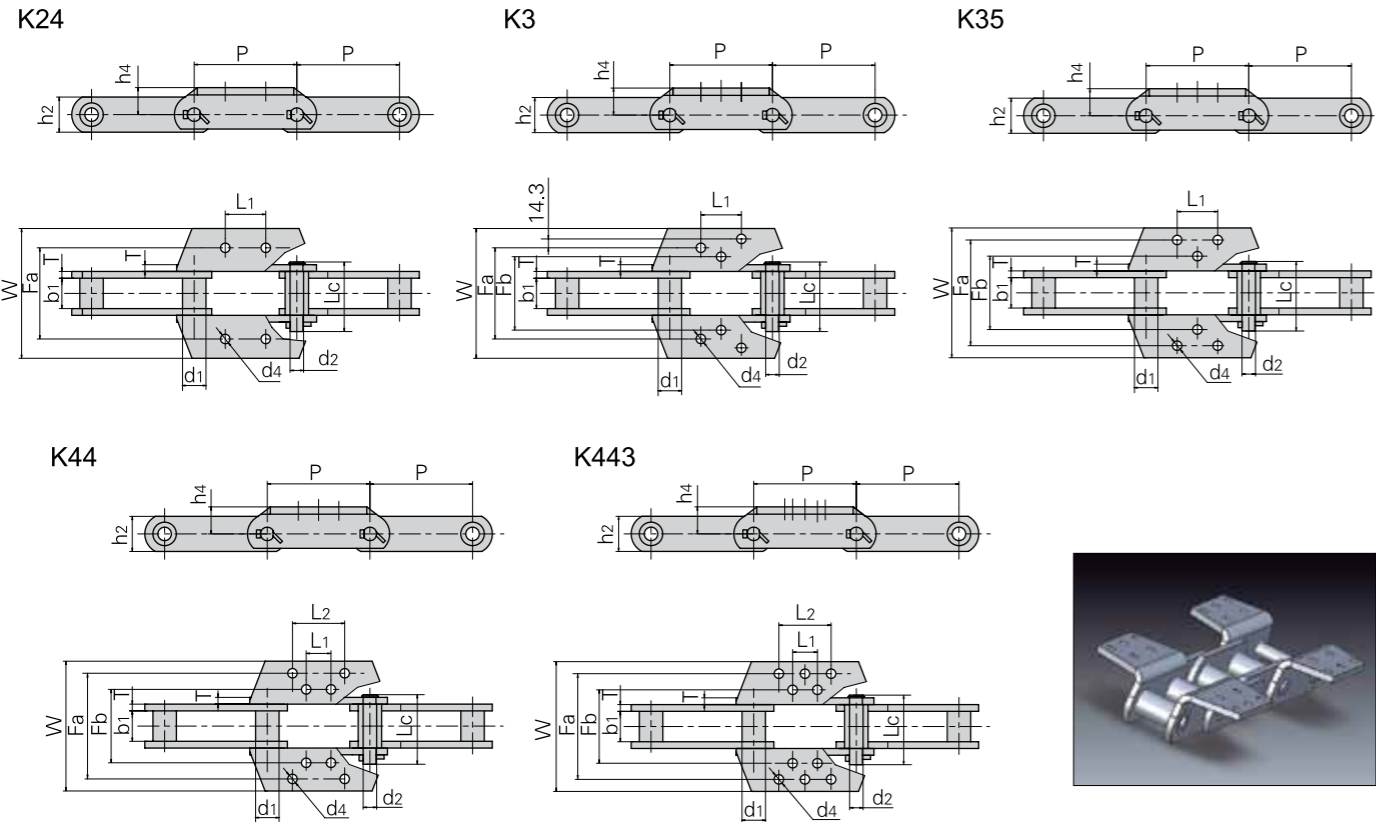


Donghua Chain No.	Pitch	Roller diameter	Width between inner plates	Pin diameter	Pin length	Plate depth	Plate thickness	Attachment dimension			Ultimate tensile strength	
	P	d1 max	b1 min	d2	L	h2	T	F	L1	d4	E	Q <sub>min</sub>
	mm	mm	mm	mm	mm	mm	mm	mm	mm	mm	mm	kN/lbf
P76.2F31	76.2	34.9	37.1	15.9	86.5	44.5	7.9	80	75	14	46.5	253.6/57049
P75F18	75.0	29.0	30.0	14.5	69.0	38.1	6.3	80	75	14	38.5	204.9/46094
P75F22	75.0	32.0	37.1	15.9	86.5	44.5	7.9	75	75	14	46.5	253.6/57049
P75F24	75.0	29.0	30.0	14.5	69.0	38.1	6.3	80	75	14	38.5	204.9/46093
P100F97	100.0	40.1	51.4	19.1	109.5	50.8	9.5	100	100	16	58.0	351.0/78960
P100F127-G4	100.0	50.0	57.5	24.0	117.0	63.5	9.5	100	100	16	62.5	470.0/105730



Donghua Chain No.	Pitch	Roller diameter	Width between inner plates	Pin diameter	Pin length	Plate depth	Plate thickness	Attachment dimension			Ultimate tensile strength
	P	d1 max	b1 min	d2	L	h2	T	L1	C	d4	Q <sub>min</sub>
	mm	mm	mm	mm	mm	mm	mm	mm	mm	mm	kN/lbf
P315F12	315	120	66.5	36	162	105	16	100	133	25	1000/224958
P500F4	500	150	120.0	50	227	130	20	400	120	26	2650/596138

### Conveyor Chains for Hoisting

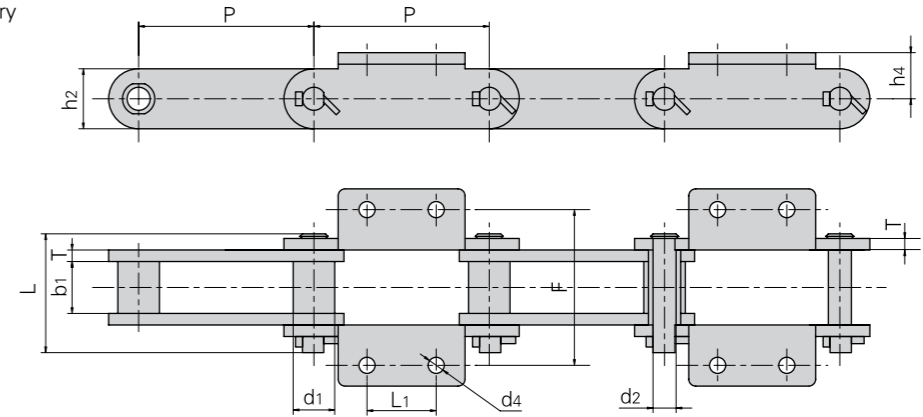


Donghua Chain No.	Pitch	Bush diameter	Width between inner plates	Pin diameter	Pin length	Plate depth	Plate thickness	Average tensile strength	Weight per meter
	P	d1	b1	d2	Lc	h2	T	Q	kg/m
	mm	mm	mm	mm	mm	mm	mm	kN/lbf	
856	152.4	44.5	76.2	25.40	155.5	63.5	12.7	539/121252	24.5
857	152.4	44.5	76.2	25.40	155.5	82.6	12.7	775/174342	30.0
859	152.4	60.3	95.3	31.75	190.0	101.6	16.0	1180/265450	51.0
864	177.8	60.3	95.3	31.75	190.0	101.6	16.0	1230/276698	51.0

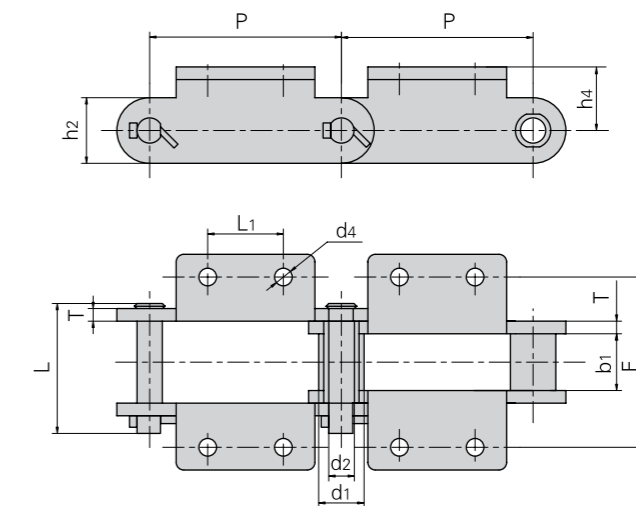
Donghua Chain No.	Attachment type	Attachment dimension									Weight per att.
		P	h4	Fb	Fa	W	L1	L2	T	d4	
		mm	mm	mm	mm	mm	mm	mm	mm	mm	kg/att.
856	K24	152.4	47.6	-	184.2	241	63.5	-	12.7	18.0	1.5
856	K3	152.4	47.6	166.7	277.8	344	70.0	-	12.7	15.0	2.8
856	K35	152.4	47.6	184.2	298.5	344	63.5	-	12.7	18.0	2.8
859	K44	152.4	76.2	228.6	330.2	381	70.0	114.5	16.0	17.5	5.0
864	K443	177.8	76.2	228.6	330.2	381	95.3	140.0	16.0	17.5	7.5

### Conveyor Chain with Attachments

For cement industry



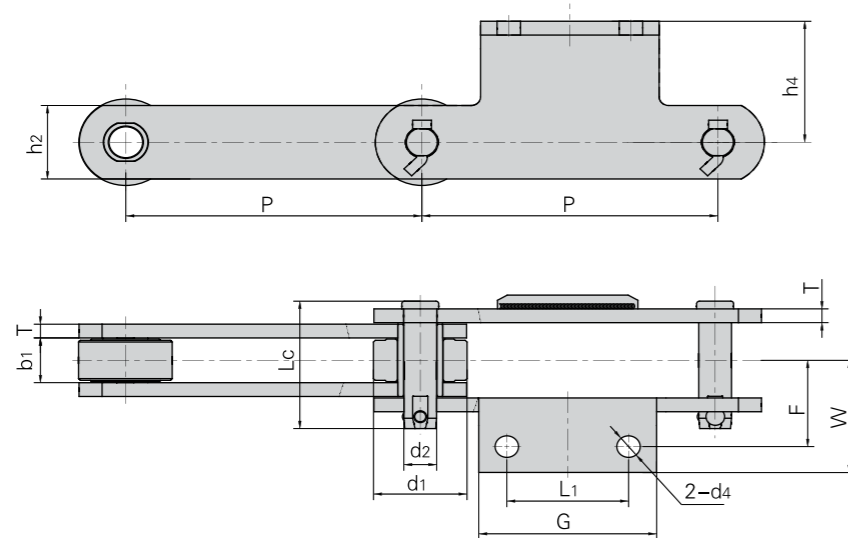
Conveyor type	Donghua Chain No.	Pitch	Roller diameter	Width between inner plates	Pin diameter	Pin length	Plate depth	Plate thickness	Attachment dimension				Ultimate tensile strength	
		P	d1	b1	d2	L	h2	T	L1	F	h4	d4	Q <sub>min</sub>	
		mm	mm	mm	mm	mm	mm	mm	mm	mm	mm	mm	mm	kN/lbf
DS400	P152F123	152.4	36.0	36.5	15.5	90.0	50.0	8.0	60	120	38	14		275/61863
DS640	P250F44	250.0	48.5	57.6	22.2	120.0	75.0	10.0	125	160	60	12		560/125976



Conveyor type	Donghua Chain No.	Pitch	Roller diameter	Width between inner plates	Pin diameter	Pin length	Plate depth	Plate thickness	Attachment dimension				Ultimate tensile strength	
		P	d1	b1	d2	L	h2	T	L1	F	h4	d4	Q <sub>min</sub>	
		mm	mm	mm	mm	mm	mm	mm	mm	mm	mm	mm	mm	kN/lbf
SDB400	P250F45	250.0	36.0	40.0	20.0	89.0	65.0	8.0	85	130	55	14.0		450/101230
SDB500 (540)	P250F46	250.0	36.0	44.0	21.0	94.0	85.0	8.0	85	132	55	18.5		500/112479
SDB630 (600)	P250F47	250.0	45.0	52.0	30.0	128.0	115.0	10.0	85	162	75	18.5		1000/224957

## Conveyor Chain with Attachments

For combined stacker / reclaimers



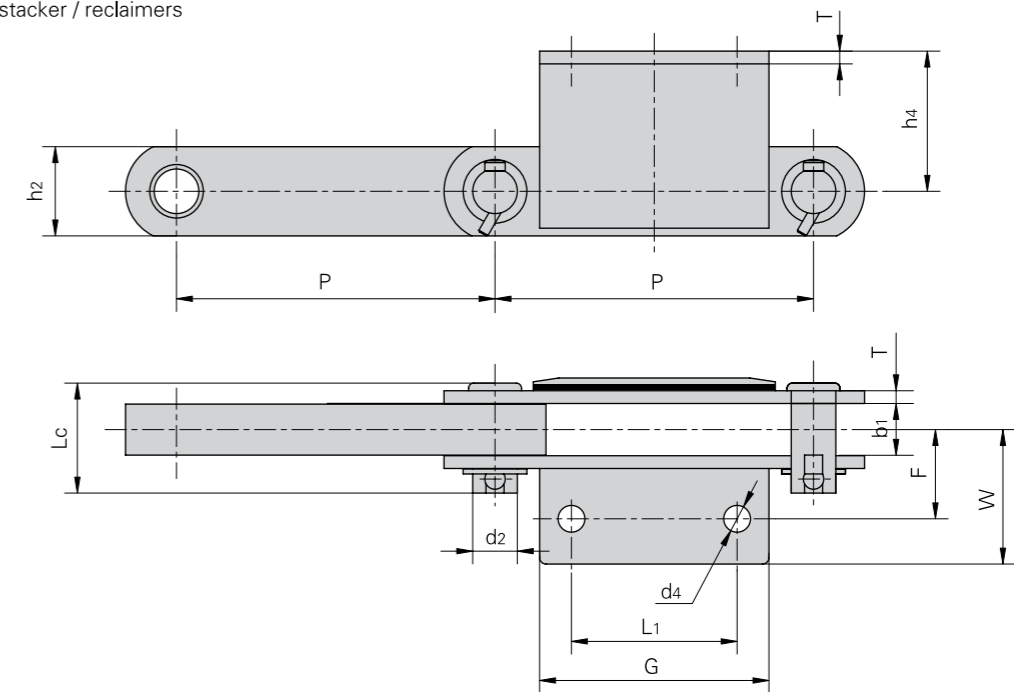
Donghua Chain No.	Pitch	Roller diameter	Width between inner plates	Pin diameter	Pin length	Plate depth	Plate thickness	Ultimate tensile strength	Average tensile strength
	P mm	d1 max mm	b1 max mm	d2 max mm	Lc max mm	h2 mm	T mm	Q min kN/lbf	Q0 kN
P315F11	315	100.0	52	35	148	85	16	800/179966	900
P250F74	250	76.5	40	24	117	60	12	400/89983	450

Donghua Chain No.	P	L1	G	F	W	h4	d4
	mm	mm	mm	mm	mm	mm	mm
P315F11	315	130	190	100.0	130.0	140	25
P250F74	250	100	160	83.5	111.5	149	21



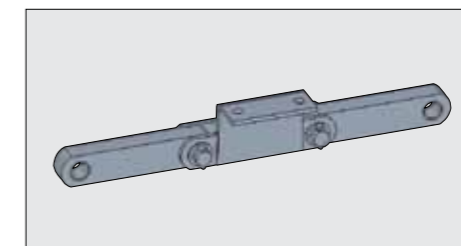
## Conveyor Chains with Attachments

For combined stacker / reclaimers

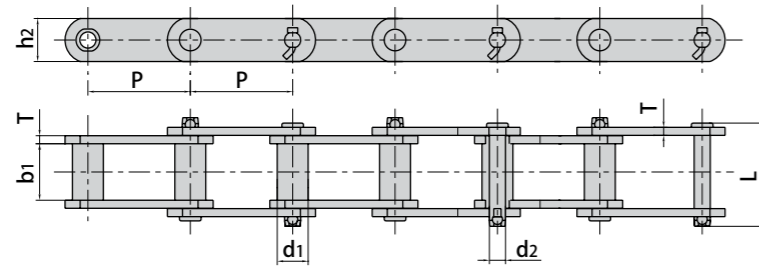


Donghua Chain No.	Pitch	Width between outer plates	Pin diameter	Pin length	Plate depth	Plate thickness	Ultimate tensile strength	Average tensile strength
	P mm	b1 mm	d2 mm	Lc mm	h2 mm	T mm	Q min kN/lbf	Q0 kN
P250F61	250	40	35	91	70	10	400/89983	450

Donghua Chain No.	L1	G	d4	h4	F	W
	mm	mm	mm	mm	mm	mm
P250F61	130	185	21	110	70	105



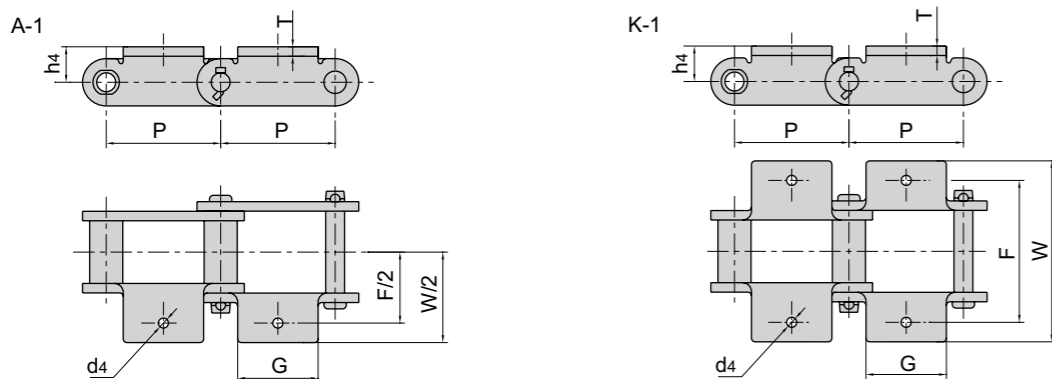
### Engineering Steel Bush Chains



ANSI Chain No.	Donghua Chain No.	Pitch P	Bush diameter d1 max	Width between inner plates b1 min	Pin diameter d2 max	Pin length L max	Plate depth h2 max	Plate thickness T max	Ultimate tensile strength Q min	Average tensile strength Q0	Weight per meter q
		mm	mm	mm	mm	mm	mm	mm	kN/lbf	kN	kg/m
*S102B		101.60	25.40	54.10	15.88	111.3	38.10	9.7	160.0/35993	176.0	10.40
S110		152.40	32.00	54.10	15.88	111.3	38.10	9.7	160.0/35993	176.0	9.80
S111		120.90	36.60	66.80	19.05	131.2	50.80	9.7	214.0/48141	235.4	15.90
S131		78.11	32.00	33.50	15.88	90.5	38.10	9.7	160.0/35993	176.0	11.60
S150		153.67	44.70	84.30	25.40	164.6	63.50	12.7	378.0/85034	416.0	25.70
S188		66.27	22.40	26.90	12.70	68.6	28.40	6.4	102.0/22946	112.2	5.60
S856		152.40	44.40	76.20	25.40	154.9	63.50	12.7	365.0/82110	401.5	25.00
S857		152.40	44.40	76.20	25.40	154.9	82.60	12.7	432.0/97182	475.2	32.00
S859		152.40	60.40	95.30	31.75	188.5	101.60	16.0	690.0/155221	759.0	55.90
S864		177.80	60.40	95.30	31.75	188.5	101.60	16.0	690.0/155221	759.0	51.80
	S102.5	102.36	34.93	57.15	19.05	115.0	44.45	9.5	214.0/48141	235.4	14.09
	S110F1	152.40	31.75	53.48	15.88	111.0	44.45	9.5	160.0/35993	176.0	10.50
	S111F1	120.90	36.51	66.68	19.05	125.0	50.80	9.5	214.0/48141	235.4	15.46
	S150F1	153.67	44.50	80.60	28.60	152.0	80.00	12.0	900.0/202328	990.0	29.87

\*S102B welded 'non-standard' attachments available to suit your requirements

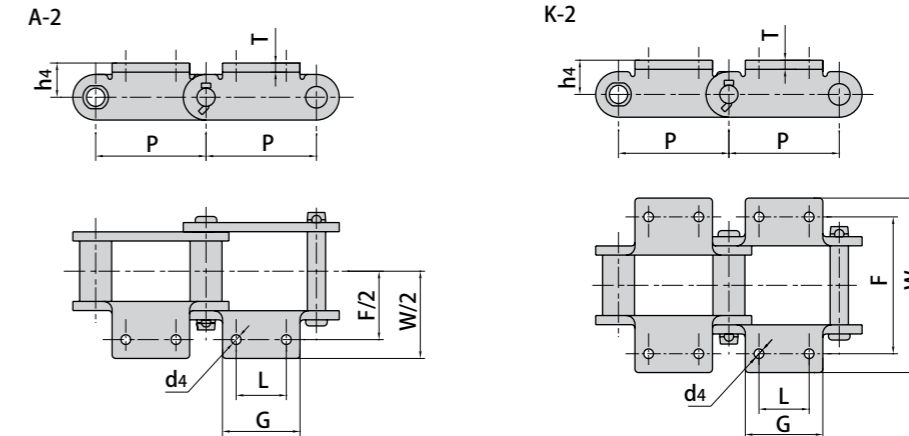
### Engineering Steel Bush Chain Attachments



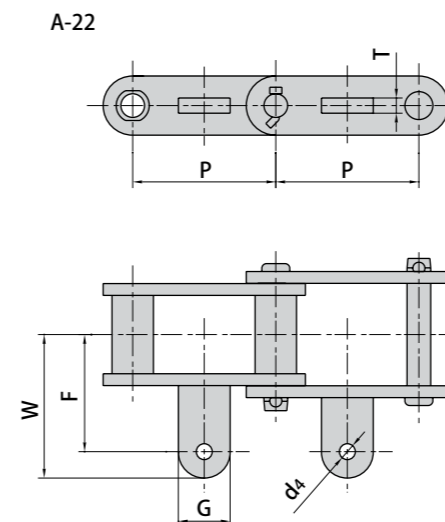
ANSI Chain No.	P	G	F	W	h4	d4	T
	mm	mm	mm	mm	mm	mm	mm
*S102B	101.60	77.0	121.0	180.8	25.4	10.2	9.7
S131	78.11	73.9	104.6	157.0	25.4	13.5	9.7
S188	66.27	54.6	95.2	131.6	20.6	10.2	6.4

\*S102B only with A-1 integral or welded attachments

### Engineering Steel Bush Chains



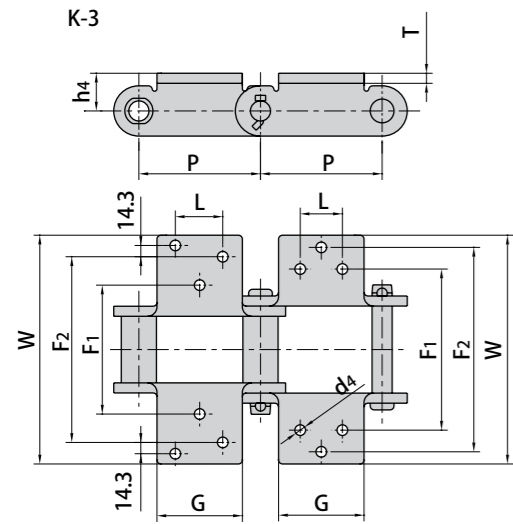
ANSI Chain No.	Donghua Chain No.	P	L	G max	F	W max	h4	d4 min	T
		mm	mm	mm	mm	mm	mm	mm	mm
S102B		101.60	44.50	69.9	134.90	180.80	25.40	10.20	9.7
S110		152.40	44.50	89.6	134.90	180.80	25.40	10.20	9.7
S111		120.90	58.70	92.7	158.80	210.80	38.10	13.50	9.7
S131		78.11	38.10	73.9	104.60	157.00	25.40	13.50	9.7
S150		153.67	69.90	108.7	190.50	249.40	47.80	13.50	12.7
S188		66.27	31.80	54.6	106.40	131.60	20.60	8.60	6.4
S856		152.40	63.50	103.1	184.20	241.30	47.80	16.80	12.7
	S102.5	102.36	44.45	69.0	136.53	163.51	28.58	9.50	9.5
	S110F1	152.40	44.45	88.9	134.94	165.10	27.78	10.30	9.5
	S111F1	120.90	58.70	87.5	158.75	196.85	38.10	13.70	9.5
	S102.5A2F1	102.36	44.45	80.0	134.60	172.00	28.58	14.50	9.5
	S856F3	152.40	57.15	108.0	160.30	215.90	47.80	13.49	12.7
	S110F3	152.40	44.50	76.2	134.90	161.00	25.40	10.20	9.7
	S188F6	66.27	31.75	54.6	105.20	129.30	22.30	11.11	6.4
	S856F5	152.40	63.50	180.0	184.15	241.00	12.70	18.00	12.7



ANSI Chain No.	Donghua Chain No.	P	G	F	W	d4	T
		mm	mm	mm	mm	mm	mm
S188		66.27	49.2	45.2	61.2	10.2	10.4
	S188A22F1	66.27	32.0	45.2	61.2	12.0	6.4

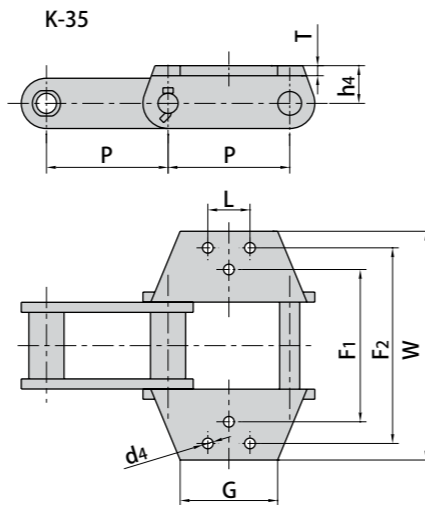


Engineering Steel Bush Chain Attachments

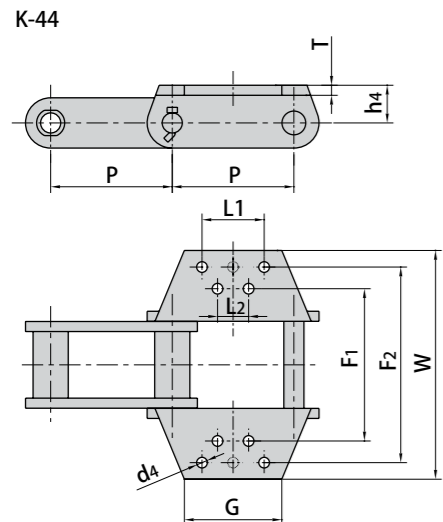


ANSI Chain No.	P	G	L	F1	F2	W	h4	d4	T
	mm	mm	mm	mm	mm	mm	mm	mm	mm
S150	153.67	109.5	69.9	190.5	292.1	347.5	47.8	13.5	13.5
S856	152.40	152.4	69.9	166.6	277.9	349.3	47.8	13.5	13.5

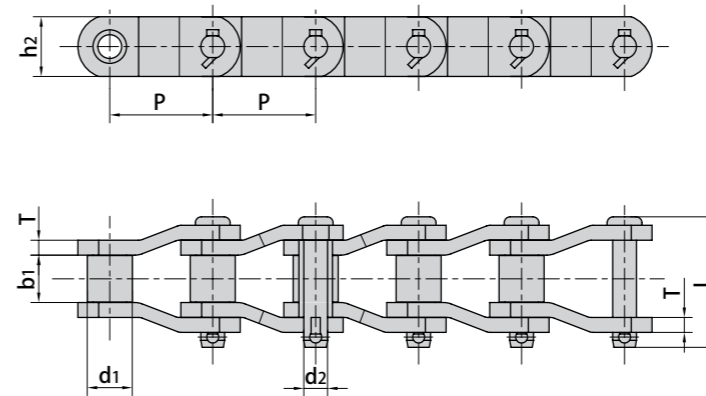
ANSI Chain No.	P	G	L	F1	F2	W	h4	d4	T
	mm	mm	mm	mm	mm	mm	mm	mm	mm
S856	152.4	146.1	63.5	184.2	298.5	349.3	47.8	16.8	13.5



ANSI Chain No.	P	G	L1	L2	F1	F2	W	h4	d4	T
	mm	mm	mm	mm	mm	mm	mm	mm	mm	mm
S857	152.4	146.1	88.9	88.9	177.8	304.8	355.6	63.5	13.5	13.5
S859	152.4	146.1	114.3	69.9	228.6	330.2	381.0	76.2	16.8	13.5
S864	177.8	146.1	139.7	95.3	228.6	330.2	381.0	76.2	16.8	13.5



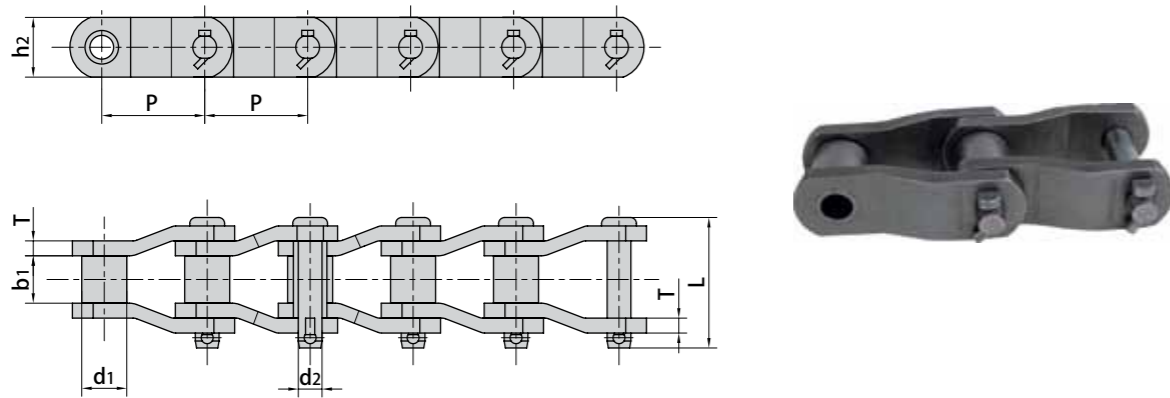
Heavy Duty Cranked-Link Transmission Chains



Donghua Chain No.	Pitch	Roller diameter	Width between inner plates	Pin diameter	Pin length	Plate depth	Plate thickness	Ultimate tensile strength	Average tensile strength	Weight per meter
	P mm	d1 max mm	b1 min mm	d2 max mm	L max mm	h2 mm	T mm	Q min kN/lbf	Q0 kN	q kg/m
MXS432	42.01	22.23	25.40	11.10	57.9	28.50	4.8	80.80/18363	88.0	5.65
R3112	50.80	28.70	31.00	14.20	73.9	41.40	6.4	168.90/38385	185.0	10.70
R3112F1	50.80	28.70	31.00	15.06	79.5	41.40	7.9	195.60/18363	225.0	12.23
SS2065	50.80	28.58	32.50	15.05	79.5	38.00	7.9	220.00/49998	242.0	12.14
2010	63.50	31.75	38.10	15.90	89.0	47.80	7.9	250.00/56818	275.0	13.53
2010H	63.50	31.75	31.75	15.88	97.0	41.50	9.5	250.00/56818	275.0	11.91
2010SH	63.50	31.75	38.10	15.88	97.0	41.50	9.5	300.00/68181	330.0	12.00
*SS588F4	66.27	22.23	30.40	11.11	60.0	32.00	4.8	90.00/20454	103.0	5.05
MXS882	66.27	22.23	28.58	11.10	68.5	28.50	6.4	115.60/26272	124.8	5.30
SS588	66.27	22.23	28.60	11.11	63.7	28.60	6.4	130.00/29545	144.0	5.46
SS588F1	66.27	22.23	27.00	11.11	62.0	28.60	6.4	88.90/20205	97.8	5.39
SS588F2	66.27	22.23	27.00	9.53	59.0	25.40	5.6	84.46/19195	91.2	4.26
*MX603	76.20	22.50	38.00	14.00	88.0	40.00	8.0	147.00/33408	161.0	9.20
*MXS3011F1	77.90	31.75	39.60	19.05	100.0	57.00	9.7	407.50/18363	468.0	17.68
2512(MXS3011)	77.90	41.28	39.60	19.05	100.0	57.00	9.7	340.00/77272	367.2	18.40
2512F2	77.90	41.28	38.50	19.05	103.4	60.00	10.0	400.00/90909	420.0	20.28
2512F3	77.90	41.28	40.00	18.60	104.2	46.70	11.0	340.00/77271	391.0	18.15
2512F4	77.90	41.28	39.60	19.05	110.0	60.00	12.0	407.50/92612	468.0	23.60
SS568H	77.90	41.30	39.70	19.05	97.6	57.00	9.5	340.00/77272	367.2	19.80
SS568HF2	77.90	31.75	39.70	19.05	98.5	57.00	9.5	447.00/101588	491.0	16.90

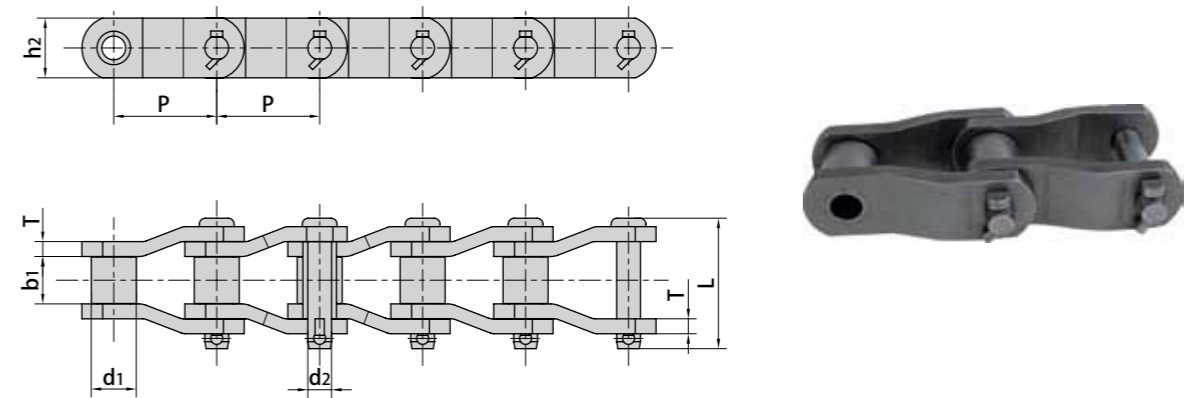
\*Bush chain: d1 in the table indicates the external diameter of the bush.

### Heavy Duty Cranked-Link Transmission Chains



Donghua Chain No.	Pitch	Roller diameter	Width between inner plates	Pin diameter	Pin length	Plate depth	Plate thickness	Ultimate tensile strength	Average tensile strength	Weight per meter
	P mm	d1 max mm	b1 min mm	d2 max mm	L max mm	h2 mm	T mm	Q min kN/lbf	Q0 kN	q kg/m
SS568HF3	77.90	41.30	39.70	19.05	104.1	57.00	11.0	489.3/111203	562.0	20.85
2510	78.10	31.75	36.90	16.00	94.8	40.00	8.0	271.0/61590	292.6	10.72
2510F1	78.10	31.75	36.60	16.00	88.9	38.10	8.0	124.5/28295	137.0	9.93
2510F1-CF1	78.10	31.75	36.60	16.00	88.9	38.10	8.0	124.5/28295	137.0	10.00
2510F2	78.10	31.75	36.60	15.75	88.0	38.10	8.0	225.0/51135	248.0	11.70
2510H	78.10	31.75	36.90	16.50	95.3	45.00	9.5	280.4/63727	302.8	12.70
MXS3075	78.10	31.75	38.10	16.46	93.5	44.50	9.7	334.0/75907	365.8	13.45
MXS3075F1	78.10	33.00	38.10	16.46	94.5	44.50	9.7	334.0/75907	365.8	14.00
MXS3075F1SH	78.10	33.00	38.10	16.46	94.5	44.45	9.7	360.0/81817	414.0	13.96
MXS3075F2	78.10	31.75	38.10	17.81	90.0	45.00	8.0	333.2/75726	365.8	12.20
MXS3075F3	78.10	33.30	38.10	16.46	94.5	44.50	9.7	334.0/75908	384.0	14.00
MXS3075F4	78.10	33.30	38.10	17.15	94.5	44.50	9.7	360.0/81817	414.0	14.00
SS40H(P)	78.11	31.75	38.10	15.88	97.0	41.50	9.5	250.0/56818	280.0	12.60
3125	79.37	41.27	39.70	20.32	101.6	57.20	9.5	347.1/78885	400.0	20.10
3125F1	79.37	41.27	39.70	20.32	101.6	57.20	9.5	374.0/84998	430.0	20.10
3125F2	79.37	41.27	41.30	20.32	105.0	57.20	9.5	481.2/109362	529.0	20.44
3125HF1	79.37	43.00	41.00	22.23	108.0	57.20	11.0	400.0/90908	500.0	23.25
2814	88.90	44.45	36.60	22.23	117.6	58.00	12.7	471.0/105955	507.6	25.70
2814F1	88.90	44.45	36.90	22.23	117.6	60.00	13.5	556.0/126358	611.0	24.20
2814F2	88.90	44.45	38.60	22.23	119.6	58.00	12.7	559.0/127040	614.9	25.40

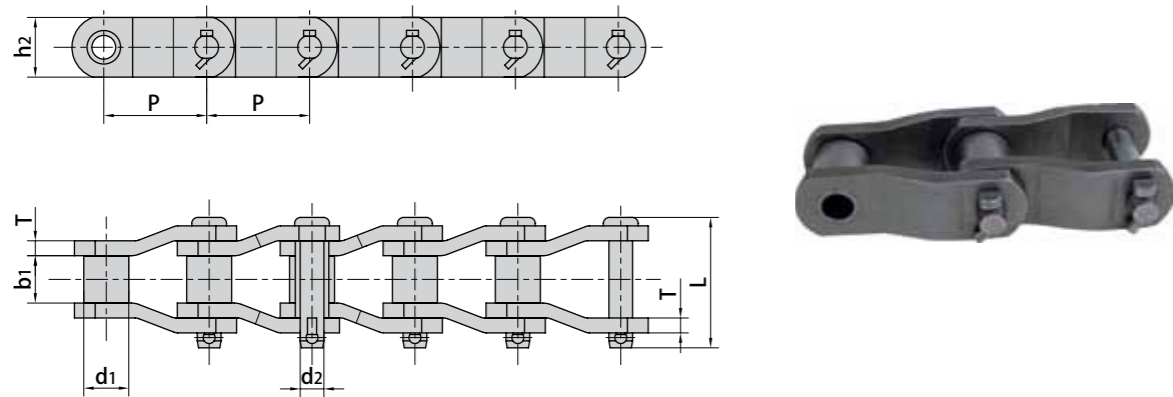
### Heavy Duty Cranked-Link Transmission Chains



Donghua Chain No.	Pitch	Roller diameter	Width between inner plates	Pin diameter	Pin length	Plate depth	Plate thickness	Ultimate tensile strength	Average tensile strength	Weight per meter
	P mm	d1 max mm	b1 min mm	d2 max mm	L max mm	h2 mm	T mm	Q min kN/lbf	Q0 kN	q kg/m
RO1644F1	96.000	44.80	39.00	23.80	119.00	60.00	14.0	530.0/120453	609.0	27.45
*MX604	101.600	25.00	57.00	16.00	117.00	50.00	10.0	227.0/51590	261.0	13.63
SB1254	103.124	45.21	30.48	23.81	107.95	57.15	12.7	400.0/90908	460.0	22.67
3214	103.200	44.45	48.00	22.00	123.50	55.00	13.0	476.0/108180	514.0	23.60
3214F1	103.200	44.45	49.20	23.90	129.00	60.00	14.0	666.4/151450	700.0	26.70
3214F2	103.200	44.45	39.70	19.05	97.60	57.20	9.5	456.0/103635	500.0	17.67
3214F3	103.200	46.00	49.20	23.90	123.50	60.00	13.0	539.0/122498	619.0	26.16
MXS1242	103.200	44.45	49.20	22.23	124.50	57.00	12.8	623.0/141591	672.8	24.63
MXS1242F1	103.200	44.45	55.00	22.23	128.80	57.00	12.8	623.0/141589	716.0	24.16
SS124	103.200	44.45	49.20	22.23	127.20	57.00	12.7	560.0/127272	590.0	22.57
3315	103.450	45.24	49.30	23.85	130.00	63.50	14.2	550.0/125000	594.0	27.71
3315F1	103.450	45.24	47.60	23.85	134.00	60.00	15.0	650.0/147725	747.0	27.34
3315F2	103.450	50.00	49.30	25.00	142.50	63.50	16.0	620.0/140907	713.0	32.50
SH1245	103.450	45.30	49.60	23.80	130.00	60.00	14.5	722.0/164084	794.0	31.00
SS1245	103.450	45.20	49.60	23.80	129.40	60.00	14.5	550.0/125000	605.0	31.19
SS1245F1	103.450	45.20	49.60	25.60	132.30	60.00	14.5	530.0/120453	609.0	28.53
SS1245F2	103.450	46.20	52.00	23.80	139.20	60.00	16.0	530.0/120453	609.0	31.15
3618	114.300	57.15	52.30	27.97	138.00	79.20	14.2	760.0/172727	820.8	41.20
SS635H	114.300	57.20	52.40	27.94	137.00	76.20	14.5	760.0/172727	836.0	37.80
SS635HF1	114.300	57.20	52.40	27.94	137.00	76.20	17.5	964.0/219085	1060.0	37.90

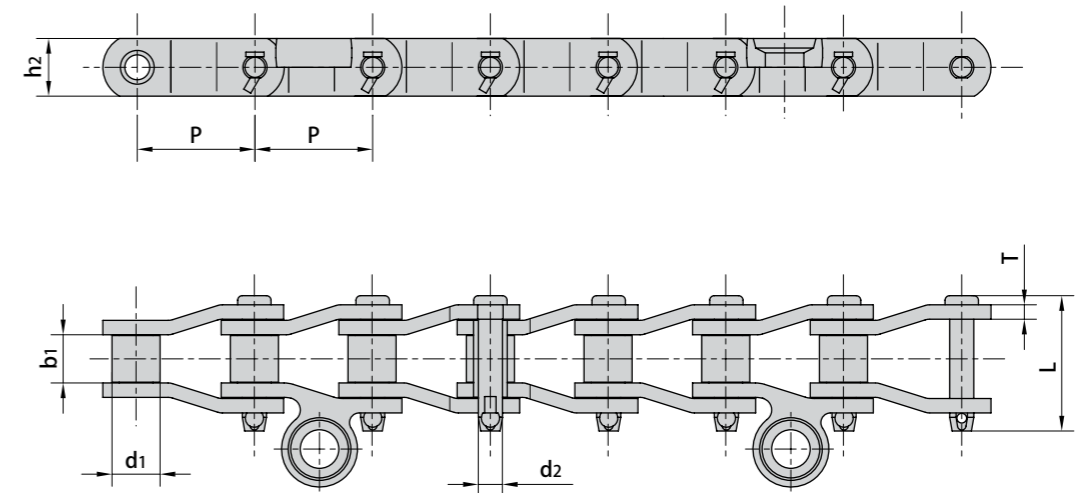
\*Bush chain: d1 in the table indicates the external diameter of the bush.

## Heavy Duty Cranked-Link Transmission Chains



Donghua Chain No.	Pitch	Roller diameter	Width between inner plates	Pin diameter	Pin length	Plate depth	Plate thickness	Ultimate tensile strength	Average tensile strength	Weight per meter
	P	d1 max	b1 min	d2 max	L max	h2	T	Q min	Q0	q
	mm	mm	mm	mm	mm	mm	mm	kN/lbf	kN	kg/m
SS635HF2	114.300	57.20	52.40	27.94	137.0	76.20	7.5	964.0/219088	1108.0	37.90
4020	127.000	63.50	69.90	31.78	165.7	88.90	15.7	987.0/224300	1069.2	48.60
4020F1	127.000	63.50	68.30	31.78	168.1	90.00	17.0	1100.0/249997	1265.0	50.60
4020F2	127.000	69.85	68.30	35.05	173.0	95.25	19.0	1100.0/249997	1265.0	59.08
4020F3	127.000	63.50	69.90	34.93	176.0	91.00	19.0	1410.0/320450	1551.0	58.40
4020HF1	127.000	63.50	69.90	34.93	176.0	88.90	19.0	1300.0/295451	1495.0	54.50
4020HF2	127.000	63.50	65.02	34.93	171.0	88.90	19.0	1300.0/295451	1430.0	38.58
4020SHF1	127.000	63.50	69.90	31.78	165.7	88.90	15.7	1333.0/302905	1532.0	48.60
RO1205	127.000	63.50	65.00	31.75	147.6	82.50	14.2	872.0/198177	955.0	42.93
2184	152.400	76.20	35.00	22.20	96.0	51.00	9.5	330.0/75000	378.0	18.17
4824	152.400	76.20	74.60	38.10	186.0	100.00	20.0	1600.0/363632	1700.0	69.80
6060	152.400	88.90	101.00	47.63	228.7	114.30	22.0	1700.0/386359	1955.0	97.59
DH6042F1	152.400	76.35	76.30	38.05	188.0	101.60	19.0	1400.0/318178	1610.0	58.36
RO6042F1	152.400	76.20	76.30	44.00	184.0	120.00	19.0	1500.0/340900	1600.0	63.60
P153	153.619	34.93	53.98	17.48	107.0	44.50	9.5	150.0/34090	165.0	10.90
P153F1	153.619	34.93	53.98	17.48	100.0	44.50	8.0	150.0/34090	165.0	9.74
P153F2	153.619	34.93	53.98	17.48	100.0	44.50	8.0	150.0/34090	165.0	9.80
5628	177.800	88.90	82.60	44.45	210.0	133.00	22.0	1890.0/429540	2173.0	99.50
5628F1	177.800	88.90	82.60	44.45	210.0	127.00	22.0	2224.0/505448	2557.0	96.80

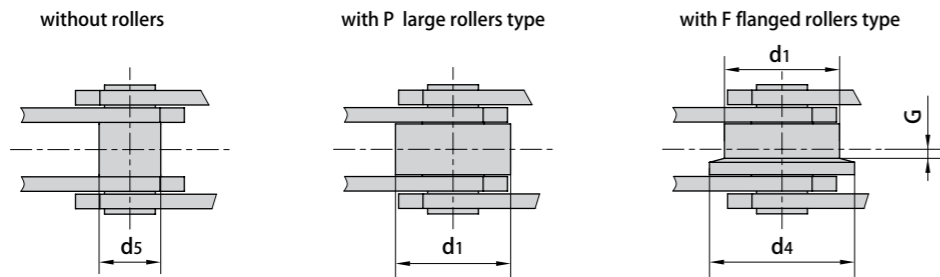
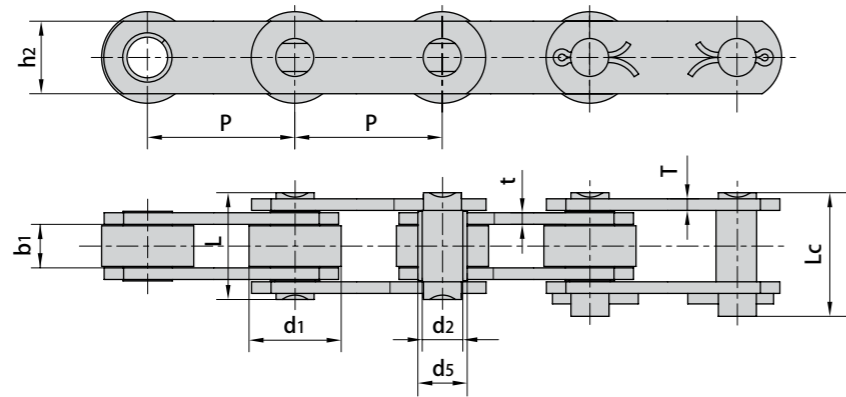
## Heavy Duty Cranked-Link Transmission Chains



Donghua Chain No.	Pitch	Roller diameter	Width between inner plates	Pin diameter	Pin length	Plate depth	Plate thickness	Ultimate tensile strength	Average tensile strength
	P	d1 max	b1 min	d2 max	L max	h2	T	Q min	Q0
	mm	mm	mm	mm	mm	mm	mm	kN/lbf	kN
SS40SL	78.105	31.78	31.75	15.90	89.15	38.0	9.5	250.0/56818	266.88



Conveyor Chains (Z series)

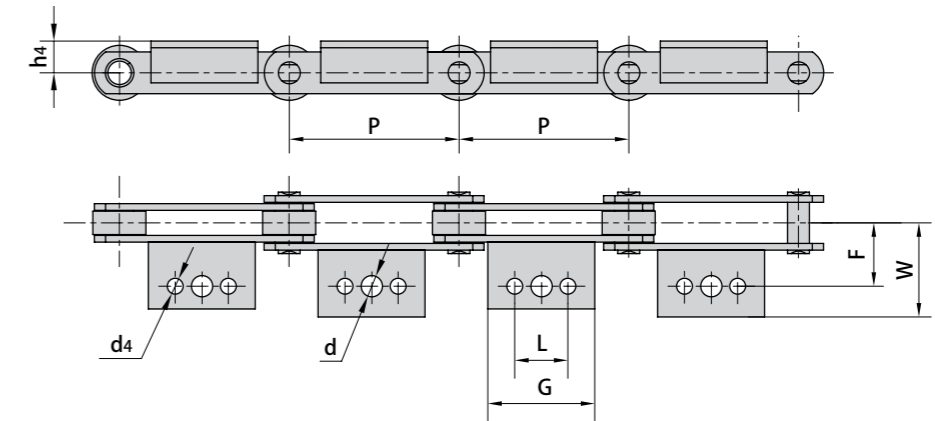


Donghua Chain No.	Pitch								Roller dimension			Bush diameter
	P								d1 max	d4 max	G	d5 max
	mm								mm	mm	mm	mm
Z40	50.8	63.5	76.2	88.9	101.6	127.0	152.4	31.75	40.0	2.5	17.0	
Z100	76.2	88.9	101.6	127.0	152.4	177.8	203.2	47.50	60.0	3.5	23.0	
Z160	101.6	127.0	152.4	177.8	203.2	228.6	254.0	66.70	82.0	3.5	33.0	
Z300	152.4	177.8	203.2	254.0	304.8	-	-	88.90	114.0	8.5	38.0	

Donghua Chain No.	Width between inner plates	Pin diameter	Plate depth	Pin length		Plate thickness	Breaking load	
	b1 min	d2 max	h2 max	L max	Lc max	t/T max	Q min	*Q min
	mm	mm	mm	mm	mm	mm	kN/lbf	kN/lbf
Z40	15.0	14.0	25.0	37.0	40.5	4.0	40.0/9091	50.0/11362
Z100	19.0	19.0	40.0	45.0	50.5	5.0/4.0	100.0/22725	130.0/29540
Z160	26.0	26.9	50.0	58.0	63.5	7.0/5.0	156.0/35451	200.0/45454
Z300	38.0	32.0	60.0	84.0	94.0	10.0/8.0	300.0/68175	380.0/86362

\*Q denotes the ultimate tensile strength after hardened

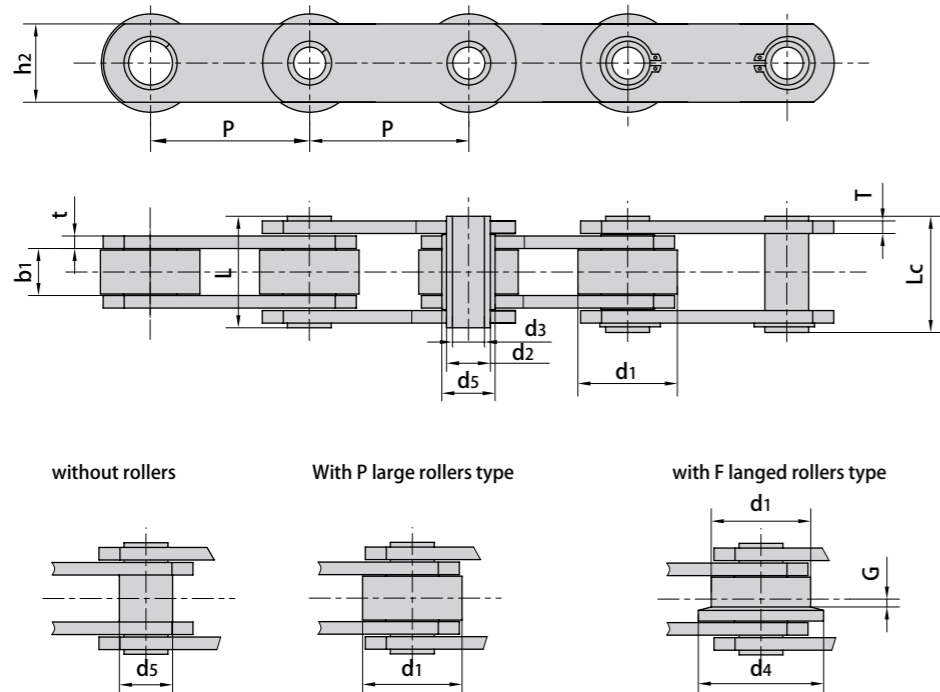
Conveyor Chains with Attachments (Z series)



Donghua Chain No.		P	L	G	d	d4	F	W	h4
		mm	mm	mm	mm	mm	mm	mm	mm
Z40	△	50.8	-	45.0				64.5	19.0
	△ ☆	63.5	22.2	43.0				56.0	
	△ ☆	76.2			10.7	9.3	38.1	68.0	
	▲	88.9	31.8	50.0				56.0	
	▲	101.6		64.0				55.0	
	▲	127.0	57.2	84.0				56.0	
Z100	△	76.2	-	30.0					32.0
	△	88.9							
	▲	101.6	31.8	64.0	14.0	10.5	44.5	65.0	
	△ ☆	127.0	57.2	84.0					
	▲	152.4		114.5					
	△ ☆	177.8	80.0	110.0					
Z160	△ ☆	101.6	-	35.0					38.0
	△ ☆	127.0	31.7	56.0					
	△ ☆	152.4		84.0	15.5	12.3	54.0	77.0	
	△ ☆	177.8	57.2						
	△ ☆	203.2	100.0	130.0					
	△ ☆	228.6		150.0					
Z300	△ ☆	254.0	135.0	170.0					
	△	152.4	38.1	70.0					
	△	177.8							
	△ ☆	203.2	76.2	100.0	17.0	14.0	73.0	100.0	
	△ ☆	254.0	90.0	152.4					
△ ☆	304.8	190.0	225.0						

△ Attachments with 1 hole  
 ☆ Attachments with 2 holes  
 ▲ Attachments with 3 holes

### Hollow Pin Conveyor Chains (ZC series)



Donghua Chain No.	Pitch							Roller dimension			Bush diameter	Plate depth
	P							d1 max	d4 max	G	d5 max	h2 max
	mm							mm	mm	mm	mm	mm
ZC21	38.1	50.8	63.5	76.2	-	-	-	25.40	-	-	11.0	18.0
ZC40	50.8	63.5	76.2	88.9	101.6	127.0	152.4	31.75	40.0	2.5	17.0	25.0
ZC60	76.2	88.9	101.6	127.0	152.4	177.8	203.2	47.50	60.0	3.5	23.0	40.0
ZC150	101.6	127.0	152.4	177.8	203.2	228.6	254.0	66.70	82.0	4.0	33.0	50.0
ZC300	152.4	177.8	203.2	254.0	304.8	-	-	88.90	114.0	8.5	38.0	60.0

Donghua Chain No.	Width between inner plates	Pin diameter			Pin length		Plate thickness	Breaking load	
	b1 min mm	d2 max mm	d3 min mm	L max mm	Lc max mm	t/T max mm	Q min kN/lbf	*Q min kN/lbf	
ZC21	12.7	9.0	6.5	26.0	27.5	2.5	21.0/4772	27.1/6159	
ZC40	15.0	14.0	10.2	36.4	37.7	4.0	40.0/9091	50.0/11362	
ZC60	19.0	19.0	13.2	45.0	46.5	5.0/4.0	60.0/13636	120.0/27270	
ZC150	26.0	26.9	20.2	58.0	60.5	7.0/5.0	150.0/34087	190.0/43177	
ZC300	38.0	32.0	22.5	83.0	85.0	10.0/8.0	300.0/68175	380.0/86362	

\*Q denotes the ultimate tensile strength after hardened

### Sprockets

We manufacture a wide range of sprocket specifications to complement our extensive conveyor chain product range, with 1000's of cast iron sprockets available from stock to suit our British Standard conveyor chains.

1) Pictured is a 6" pitch 8 tooth sprocket machined to suit a flanged roller.

We can produce sprockets to suit chains of pitch 25 mm up to 400 mm - in fabricated mild, alloy & stainless steel & plastic materials.

Cast, profile & machine cut tooth profiles, with a full machining & flame hardening service available.

2) Fabricated stainless steel - one sided boss - Machine cut teeth for the most accurate engagement with the chain.

3) Food grade plastic sprocket - Fully machine cut from solid - one sided boss.

4) Fabricated EN 8 central boss sprocket, with profile cut flame hardened teeth for additional wear resistance.

5) Fabricated EN 8 one sided boss split sprocket (quicker to remove & fit during maintenance), with machine cut flame hardened teeth for high load high wear applications.

Our split sprockets have machined mating faces for a solid location with machine cut teeth.

6) Fabricated EN 8 split plate and boss sprocket with machine cut segmental teeth to allow replacement of teeth without removal of the boss from the shaft.

As well as a wide range of specifications & materials, we can also offer a range of surface treatments to increase corrosion resistance.



## Slat Assemblies

### Twin-Strand Assemblies

We offer a wide range of fully assembled twin-strand slatted chains to suit all aspects of mechanical handling.

1) Pressed channel and fabricated slats as shown available on chains from 50mm to 304.8mm pitch.

Where conventional pressed or fabricated slats are unsuitable i.e. due to product spillage, apron or piano hinge assemblies can be employed. These utilise overlapping (apron) or interlocking (piano hinge) steel slats, supported by two strands of conveyor chain to form a continuous steel conveying medium.

### Apron Slat Assemblies

2) The slats are retained by K type attachments fitted to the chains at both sides of the slat. These are available on chains from 63mm to 304.8mm pitch.

### Piano Hinge Assemblies

3) The slats are retained by the tie bars through the hollow pins of the chain. These are available on chains from 38.1 mm to 304.8mm pitch.

All assemblies available in various widths, with chain selections based on your individual requirements to offer tailor made solutions. Due to our vast stocks of conveyor chains and sprockets, we can offer you bespoke slat assemblies at reduced delivery times.

We have a full range of imperial and metric pitch chains to suit conveyor applications across all industries - usually from stock. We stock a full range of sprockets to suit our chains in cast iron, fabricated and stainless steel. Full machining service available.

### Chain Edged Rubber Belts

4) Chain edged rubber belts are also produced to suit customers individual requirements, the rubber belts are supported with steel cross bars which attach directly to the side chains. Chain pitches from 38.1 mm to 228.6 mm pitch in various widths.



## Selection of Lubrication

**Lubrication of chain depends on the working environment, temperature, chain speed and so on.**

### 1. Influence of working environment

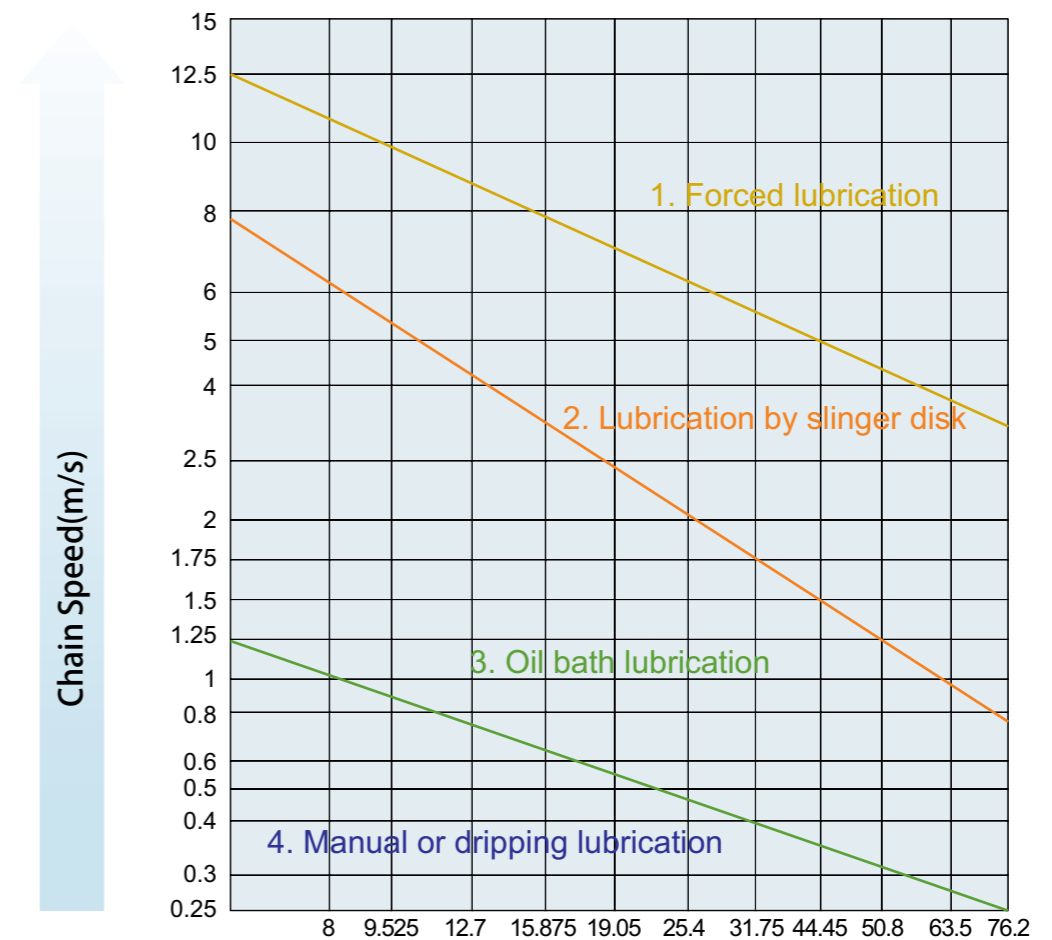
For open drive such as combine chain, swather chain etc., grease lubrication is recommended.  
For closed drive such as walking tractor chain transmission case etc., oil lubrication is recommended.

### 2. Influence of temperature

Application in the temperature range of -5°C to +60°C is recommended.  
In winter, lower viscosity oil is recommended; But in summer, higher viscosity oil is recommended.

### 3. Influence of chain speed

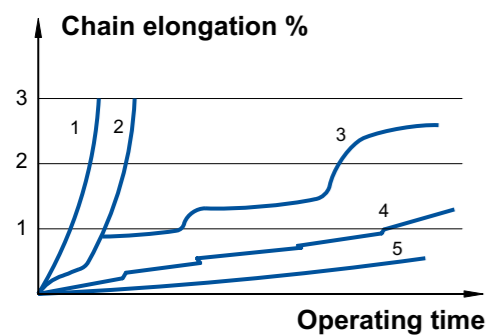
The lubrication method is related to chain speed.  
Refer to the following chart for details, please.



## Selection of Lubrication

### Lubrication

Wear is mainly caused by bearing pressure, angle-sliding movements of the pins and rotation of the rollers etc.. Effective lubrication of the chain hinges is utmost important for reducing wear, power loss and noise etc. effectively.



Graph 1: Without lubrication. Chain would be worn out and destroyed within a very short time.

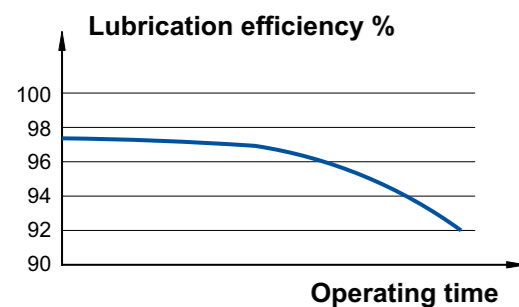
Graph 2: Optimum initial lubrication only. High wear would occur within a short time after the lubricant has been used up.

Graph 3: Manual lubrication. Intermittent dry rub frequently occurs, especially when regular periodical relubrication is not well implemented.

Graph 4: Incorrect lubrication. Uneven chain wear results from incorrect lubrication.

Graph 5: Correct lubrication. The right lubrication is the utmost important to obtain a optimum service life.

### Lubrication and efficiency



The left graph shows the efficiency of lubrication decrease with operating time.

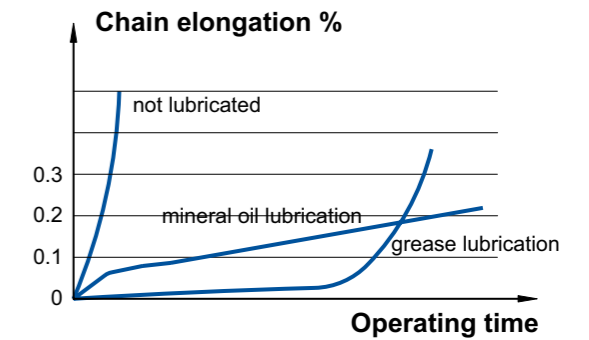
Relubrication shall be done before discoloration of the rub surface which indicates the lubrication failure of the former lubrication. The specific lubrication intervals shall be determined by tests based on specific conditions and running conditions.

## Selection of Lubrication

### Lubricant

First of all, the selection of an appropriate lubricant depends on the type of lubrication.

Just as the right diagram shows, low viscosity mineral oils are particularly suitable for chain drives.



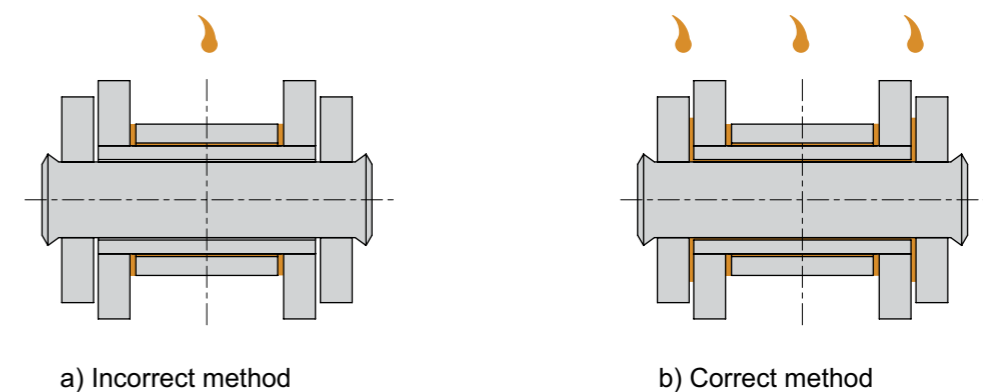
### Recommended viscosity

Ambient temperature °C	Viscosity of lubricant
-5°C~+25°C	N100 (ISO VG 100)
+25°C~+45°C	N150 (ISO VG 150)
+45°C~+60°C	N220 (ISO VG 220)

For higher temperatures (e.g. furnace chains) or severe operating conditions, mud spattering open-type etc. or heavy-duty low speed chains, graphite or molybdenum disulfide (MoS<sub>2</sub>) applied either as additive or spray will improve lubrication performance.

Low-viscosity or the grease products with a drop point of 70°C are also suitable for manual lubrication. Liquidized grease may be sprayed on the chains in special conditions and chains can start running immediately after the evaporation of the volatile carrier substance.

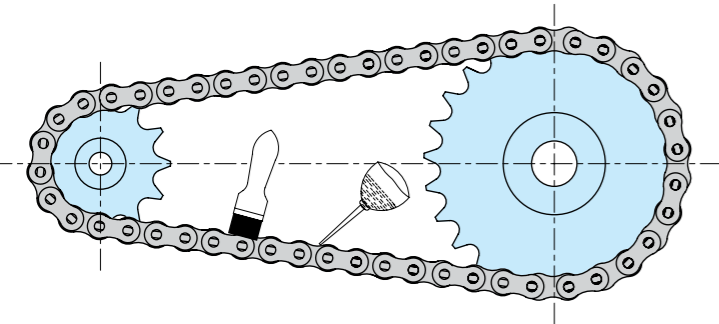
No matter which kind of lubricants and lubrication methods choosed, the most important issue is to ensure the lubricant flow into evenly (between pin and bush, between bush and roller).



## Selection of Lubrication

### ■ Selection of lubrication method

Normally, there are five lubrication methods as below:

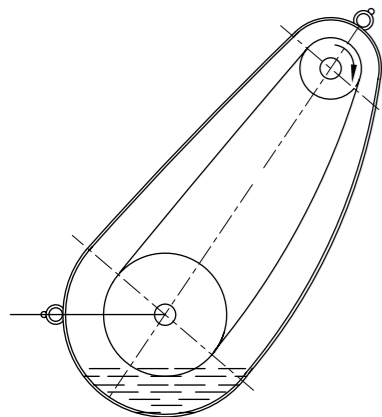
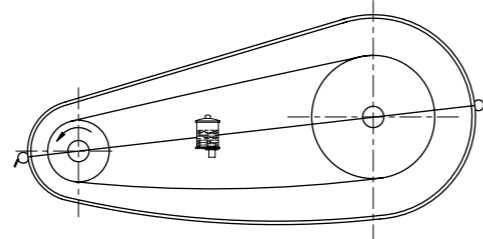


#### 1. Manual lubrication

This type of lubrication by means of oil can and brush, which adding lubricant into the gap between outer and inner link plate of chain loose side periodically is not very safe and therefore this type lubrication only suitable for those chains with occasional operation or for those secondary drives and low chain speeds. Sufficient lubrication should take place at least once a day (if possible once every eight running hours). Lubricant colouration should be avoided as far as possible.

#### 2. Drip lubrication

Drip lubrication by means of wick oilers, needle oilers or drip oilers is only suitable for low bearing pressure drives. Lubricant colouration should be avoided as far as possible.



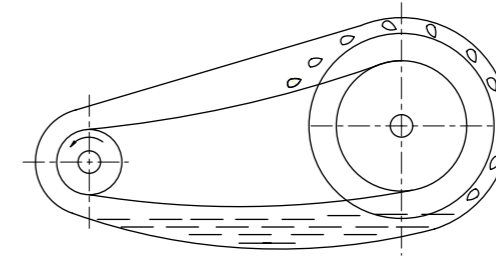
#### 3. Oil bath lubrication (submerged lubrication)

There is just enough oil in a proper chain box for preventing the worn and elongated chain knocking against the casing wall to allow the chain plates to submerge into the bath up to the rollers or the bushings respectively. But immersion should not be too deep or too shallow. Too shallow immersion lubrication is not reliable. Too deep immersion may cause the oil to heat up and lead to untimely oxidation of the oil.

## Selection of Lubrication

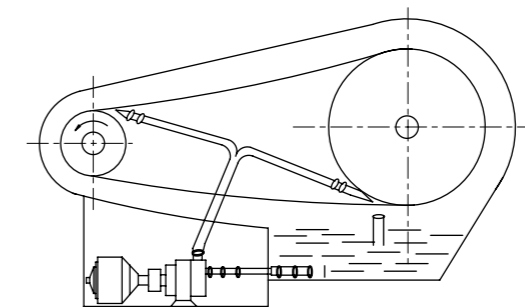
#### 4. Oil-ring lubrication (splash lubrication)

With this type of lubrication, the chain operates above oil level. A disk submerging into the lower oil level, the depth is about 12.7mm-25.4mm, Peripheral velocity between min. 3m/s and max. 40m/s, normally not bigger than 12.5m/s, centrifuges oil against the casing walls from where it continuously runs down onto the chain via drip rails. The disk should be mounted on both sides of sprocket when the chain width above 127mm.



#### 5. Force feed lubrication (pressure lubrication)

This type of lubrication is suitable for high-speed and heavy-duty type drives. Force feed lubrication is carried out to realize the circulating cooling of chains by means of oil pump and oil feeding pipe. The spray nozzles should be situated near the gearing places of chain and sprocket, and the nozzle number should be one more than the chain strands number to make them aim at the gap of each row link plate.





## Product Application



Bulk material scraper chains



Conveyor chain for cement mill



Conveyor chain for spherical coal yards



Bulk material bucket type conveyor chains



Hoisting conveyor chain for bulk material



Bulk material conveyor chains